



# PREMIUM DOOR CATALOGUE



# Elite Collection







### AGE 1011 BH

Decor and black appliqués are flush with the exterior surface.

External handle	ZAE 216 B
Colour	RAL 9005 MATT
External panel	DD 424
Enlightens	ST 01 / WG / 400
Glass motif	MS 6058/S + house number
Optional	Fingerprint scanner BT 670, glass canopy, knocker BT 107 B, view finder BT 19 EB, Black Edition set



### AGE 1013 BH

Decor and black appliqués are flush with the exterior surface.

Glass motif	MS 6060 + house number
External handle	ZAE 214 B
Colour	RAL 9005 MATT
Outer plate	DD 424
Enlightens	ST 01 / WG / 400
Glass motif	MS 6060/S + house number
Optional	Fingerprint scanner BT 670, letterbox, door knocker BT 107 B, view finder BT 19 EB, Black Edition set





### AGE 1181 B

Black appliqués are flush with the exterior surface. Milling on the inside.

Glass motif	MS 6042 OK + house number
External handle	ZAE 214 B
Colour	RAL 9007 FS
Left-hand lamp	ST 51 / 76 / WG / 400
Right-hand lamp	ST 01 / WG / 400
Glass motif	MS 6042/S
Optional	Fingerprint scanner BT 670, letterbox, Black Edition set



### AGE 1182 B

Black appliqués are flush with the exterior surface. Milling on the inside.

Glass motif	MS 6109 + house number
External handle	ZAE 214 B
Colour	RAL 9007 FS
Enlightens	ST 01 / WG / 400
Glass motif	MS 6109/S
Optional	Fingerprint scanner BT 670, Black Edition set





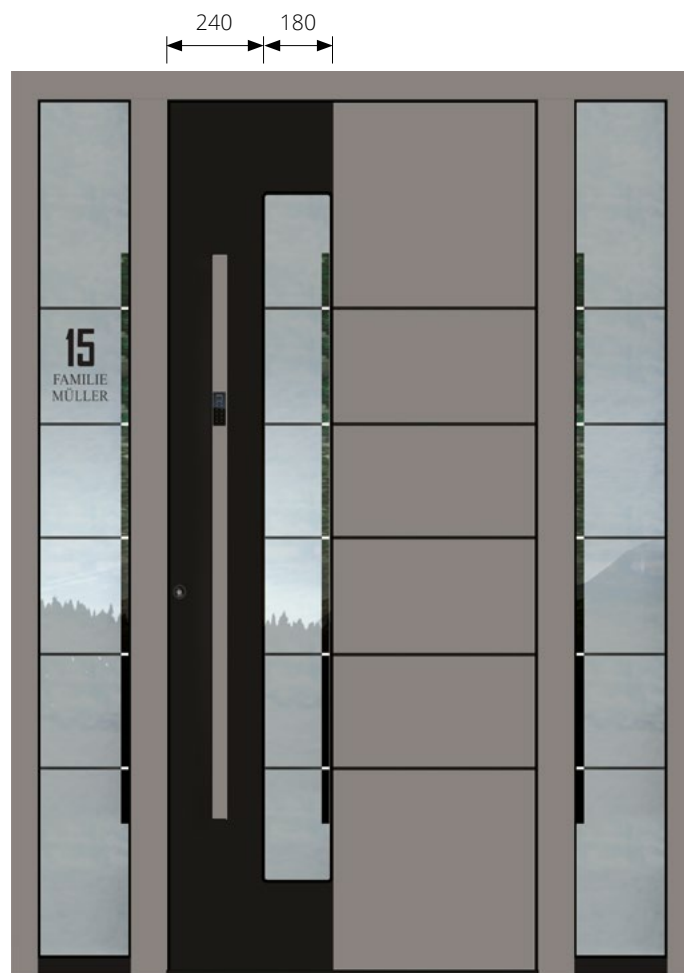


Glass motif	MS 6057 + house number
External handle	ZAE 214 B
Colour	70 784 FS
Enlightens	ST 01 / WG / 400
Glass motif	MS 6057/S
Optional	Fingerprint scanner BT 670, Black Edition set



Glass motif	MS 6890
External handle	ZAE 250 B
Colour	RAL 9007 FS
Exterior decoration	RAL 9005 matt
Left-hand lamp	ST 51 / 76 / WG / 400
Right-hand lamp	ST 01 / WG / 400
Glass motif	MS 6890/S + house number
Optional	Fingerprint scanner BT 670, letterbox BK 20 B, Black Edition set

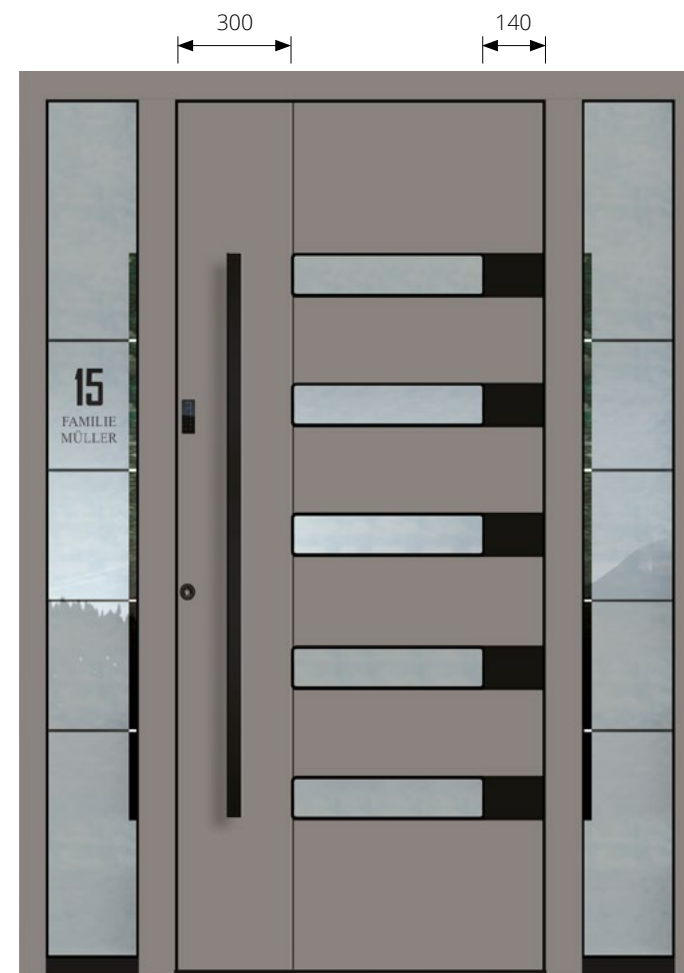




### AGE 1622 B

Decor and black appliqués are flush with the exterior surface. Milling on the inside.

Glass motif	MS 6190
External handle	ZAE 214 TF
Colour	RAL 9007 FS
Exterior decoration	RAL 9005 matt
Enlightens	ST 01 / WG / 400
Glass motif	MS 6190/S + house number
Optional	Fingerprint scanner BT 660, Black Edition set



### AGE 1359 B

Black appliqués are flush with the exterior surface. Milling on both sides.

Glass motif	MS 6831
External handle	ZAE 214 B
Colour	RAL 9007 FS
Enlightens	ST 01 / WG / 400
Glass motif	MS 6831/S + house number
Optional	Fingerprint scanner BT 670, Black Edition set









### AGE 1030

Smooth filling

External handle

Colour

Enlightens

Glass motif

Optional

GM 516 ST

70 784 FS

ST 01 / WG / 400

MS 6025/S + house number

Fingerprint scanner BT 660



### AGE 1097

Milling on both sides

Glass motif

External handle

Colour

MS 6173 + house number

GM 216 TF

70 784 FS





### AGE 1111

Smooth filling

Glass motif  
External handle

Colour  
Enlightens

Glass motif  
Optional

MS 6032 + house number

ZAE 709

80 077 FS

ST 01 / WG / 400

MS 6032/S

Fingerprint scanner BT 610



### AGE 1351

Smooth filling

Glass motif  
External handle

Colour  
Enlightens

Glass motif  
Optional

MS 6001

ZAE 709

80 077 FS

ST 01 / WG / 400

MS 6001/S + house number

Fingerprint scanner BT 610





### AGE 1654

Stainless steel applications on the outside. External milling.

Glass motif	MS 6115
External handle	ZAE 709
Colour	80 077 FS
Enlightens	ST 01 / WG / 400
Glass motif	MS 6115/S + house number
Optional	Fingerprint scanner BT 610



### AGE 1657

Stainless steel applications on the outside. External milling.

Glass motif	MS 6189
External handle	ZAE 709
Colour	80 077 FS
Enlightens	ST 01 / WG / 400
Glass motif	MS 6189/S + house number
Optional	Fingerprint scanner BT 610





### AGE 1011 B

Black appliqués are flush with the exterior surface.

External handle	ZAE 216 B
Colour	RAL 9007 FS
Outer plate	DD 424
Viewfinder	BT 19 EB
Spike	BT 107 B
Enlightens	ST 01 / WG / 400
Glass motif	MS 6058/S + house number
Optional	Fingerprint scanner BT 670, Black Edition set



### AGE 1048 B

Black appliqués are flush with the exterior surface.

External handle	ZAE 216 B
Colour	RAL 9007 FS
Outer plate	DD 424
Viewfinder	BT 19 EB
Spike	BT 107 B
Enlightens	ST 01 / WG / 400
Glass motif	MS 6058/S + house number
Optional	Fingerprint scanner BT 670, Black Edition set





### AGE 1090 B

Milling on both sides

Glass motif	MS 6039 + house number
External handle	ZAE 214 B
Colour	70 784 FS
Enlightens	ST 01 / WG / 400
Glass motif	MS 6039/S
Optional	Fingerprint scanner BT 670, Black Edition set

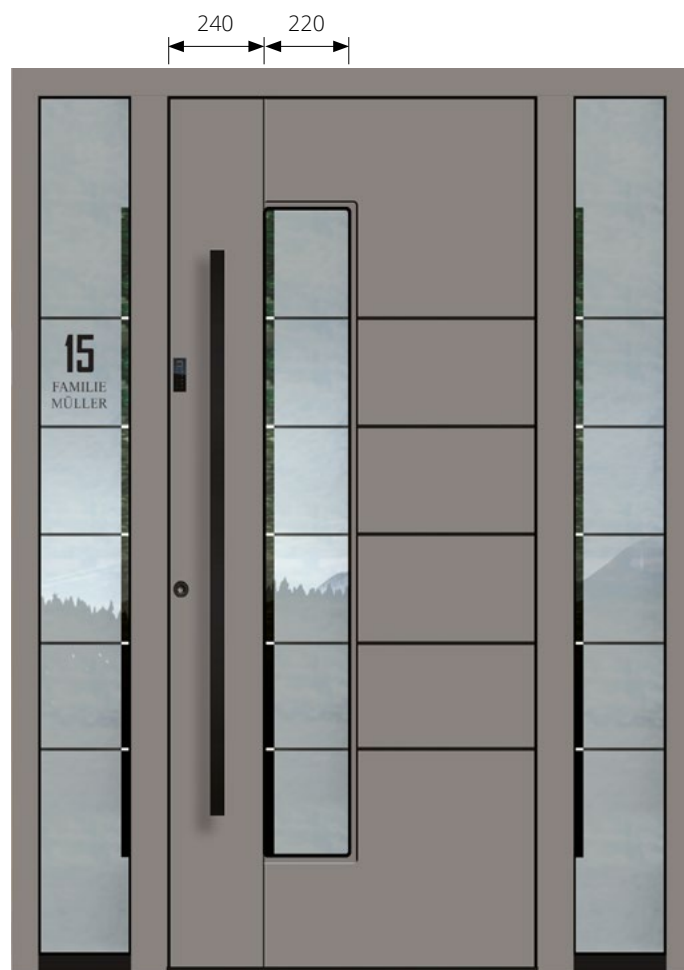


### AGE 1118 B

Milling on both sides

Glass motif	MS 6824 + house number
External handle	ZAE 214 B
Colour	RAL 9007 FS
Enlightens	ST 01 / WG / 400
Glass motif	MS 6824/S
Optional	Fingerprint scanner BT 670, Black Edition set

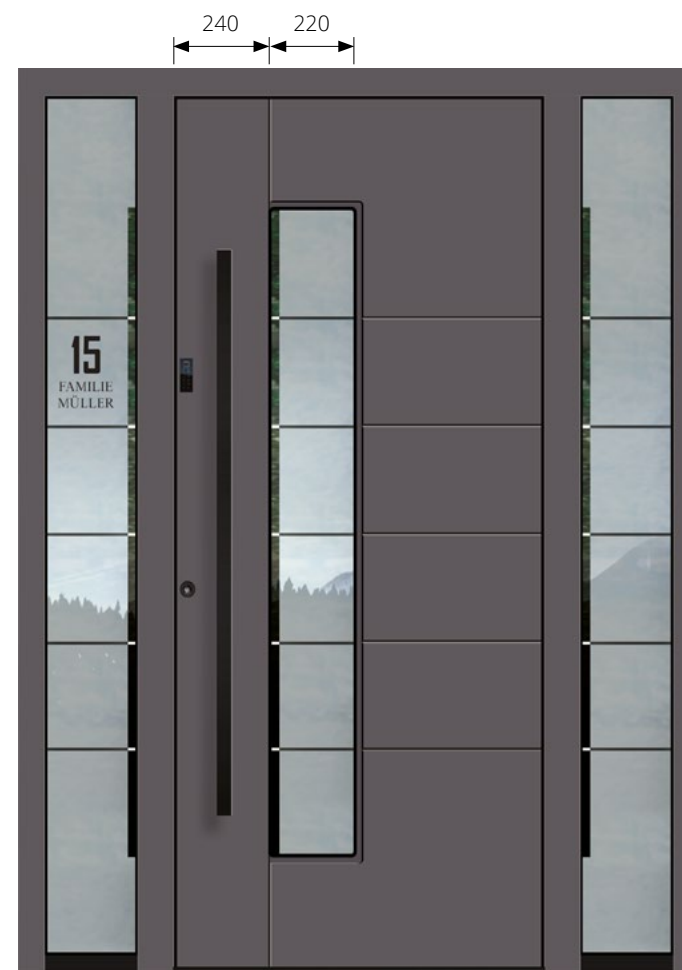




### AGE 1130 B

Black appliqués are flush on the outside. Milling on both sides

Glass motif	MS 6186
External handle	ZAE 214 B
Colour	RAL 9007 FS
Enlightens	ST 01 / WG / 400
Glass motif	MS 6186/S + house number
Optional	Fingerprint scanner BT 670, Black Edition set



### AGE 1104 B

Milling on both sides

Glass motif	MS 6186
External handle	ZAE 214 B
Colour	70 784 FS
Enlightens	ST 01 / WG / 400
Glass motif	MS 6186/S + house number
Optional	Fingerprint scanner BT 670, Black Edition set









1 2  
3 4  
5 6  
7 8  
9 0





### AGE 1098 B

Milling on both sides

Glass motif	MS 6826 + house number
External handle	ZAE 211 B
Colour	70 784 FS
Enlightens	ST 01 / WG / 400
Glass motif	MS 6826/S
Optional	Fingerprint scanner BT 670, LED lighting, Black Edition set



### AGE 1501 B

Flush décor on the outside. Milling on the inside.

Glass motif	MS 6889
External handle	ZAE 211 B
Colour	RAL 9007 FS
Exterior decoration	80 077 FS
Enlightens	ST 01 / WG / 400
Glass motif	MS 6889/S + house number
Optional	Fingerprint scanner BT 670, Black Edition set





### AGE 1044

External milling

External handle

Colour

Enlightens

Glass motif

Optional

ZAE 709

80 077 FS

ST 01 / WG / 400

MS 6670/S + house number

Fingerprint scanner BT 610



### AGE 1064

Flush décor on the outside.

External handle

Colour

Outer plate

Exterior decoration

Enlightens

Glass motif

Optional

GM 516 SA

80 077 FS

DD 416

80 077 FS

ST 01 / WG / 400

MS 6190/S + house number

Fingerprint scanner BT 660





### AGE 1015 B

Black appliqués are flush with the exterior surface.

External handle	GM 516 ST
Colour	RAL 9007 FS
Enlightens	ST 01 / WG / 400
Glass motif	MS 6178/S + house number
Optional	Fingerprint scanner BT 660, Black Edition set



### AGE 1047 B

Black appliqués flush outside. Relief inside.

External handle	ZAE 216 B
Colour	RAL 9007 FS
Enlightens	ST 01 / WG / 400
Glass motif	MS 6023/S + house number
Optional	Fingerprint scanner BT 670, Black Edition set





### AGE 1108 BH

Flush décor on the outside. Milling on both sides.

Glass motif	MS 6156
External handle	ZAE 214 B
Colour	HD 211
Exterior decoration	RAL 9005 matt
Enlightens	ST 01 / WG / 400
Glass motif	MS 6156/S + house number
Optional	Fingerprint scanner BT 670, Black Edition set



### AGE 1611 B

Flush décor on the outside. Milling on the inside.

Glass motif	MS 6863
External handle	ZAE 211 B
Colour	RAL 9007 FS
Exterior decoration	RAL 9005 matt
Enlightens	ST 01 / WG / 400
Glass motif	MS 6863/S + house number
Optional	Fingerprint scanner BT 670, Black Edition set





### AAE 1151 B

Black frame flush outside. Milling on both sides.

Glass motif	MS 6195
External handle	ZAE 211 B
Colour	RAL 7039 FS
Exterior decoration	RAL 9005 matt
Enlightens	ST 01 / WG / 400
Glass motif	MS 6195/S + house number
Optional	Fingerprint scanner BT 670, Black Edition set



### AAE 1604 B

Decor and black appliqués are flush with the exterior surface. Milling on the inside.

Glass motif	MS 6452
External handle	ZAE 214 TF
Colour	RAL 9007 FS
Exterior decoration	RAL 9005 matt
Enlightens	ST 01 / WG / 400
Glass motif	MS 6452/S + house number
Optional	Fingerprint scanner BT 670, Black Edition set

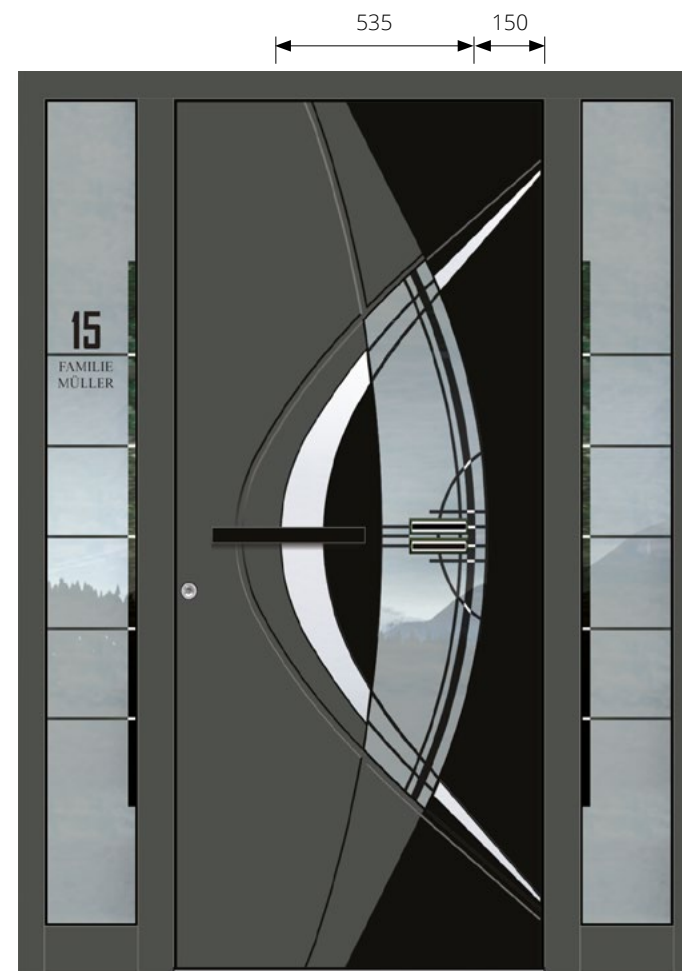




### AAE 1223

Flush décor on the outside. Non-rusting steel appliqué and milling on both sides.

Glass motif	MS 6420
External handle	ZAE 760
Colour	RAL 9007 FS
Exterior decoration	RAL 9005 matt
Enlightens	ST 01 / WG / 400
Glass motif	MS 6420/S
Optional	Fingerprint scanner BT 670, Black Edition set



### AAE 1124

Flush décor on the outside. Non-rusting steel appliqué and milling on both sides.

Glass motif	MS 6423-WS (black and white)
External handle	ZAE 240 B
Colour	80 077 FS
Exterior decoration	RAL 9005 matt
Enlightens	ST 01 / WG / 400
Glass motif	MS 6423/S + house number





### AAE 1046

Flush décor on the outside. Non-rusting steel appliques and milling on both sides.

Glass motif	MS 6200-WS (black and white)
External handle	ZAE 770 S
Colour	80 077 FS
Exterior decoration	DD 416
Enlightens	ST 01 / WG / 400
Glass motif	MS 6200/S + house number
Optional	Fingerprint scanner BT 670



### AGE 1456

Flush décor on the outside. Milling on the inside.

Glass motif	MS 6651
External handle	ZAE 709
Colour	HD 224
Exterior decoration	RAL 9005 matt
Enlightens	ST 01 / WG / 400
Glass motif	MS 6651/S + house number
Optional	Fingerprint scanner BT 610





# ART Collection





### AAE 1709 B

3D décor and 3D mouldings on the outside. Milling on the inside

External handle	GM 516 ST
Colour	HD 211
Outer plate	RAL 9005 matt
Exterior decoration	HD 211
Exterior mouldings	HD 211
Enlightens	ST 01 / WG / 400
Glass motif	MS 6876/S + house number
Optional	Fingerprint scanner BT 660, Black Edition set , glass canopy



### AAE 1714 B

3D décor and 3D mouldings on the outside. Milling on the inside

External handle	ZAE 208 B
Colour	HD 211
Outer plate	RAL 9005 matt
Exterior decoration	HD 211
Exterior mouldings	HD 211
Enlightens	ST 01 / WG / 400
Glass motif	MS 6876/S + house number
Optional	Fingerprint scanner BT 660, Black Edition set





### AAE 1625 B

6 mm ESG enamelled glass and 6 mm aluminium plate with milling on the outside. Milling on the inside.

Glass motif	MS 6897 + house number
External handle	GM 516 ST
Colour	RAL 9007 FS
Exterior decoration	ESG black glass (only with frame AT 110 P)
Enlightens	ST 01 / WG / 400
Glass motif	MS 6897/S
Optional	Fingerprint scanner BT 660, Black Edition set



### AAE 1625 B

6 mm ESG enamelled glass and 6 mm aluminium plate on the outside. Milling on the inside.

Glass motif	MS 6897
External handle	ZAE 216 B
Colour	RAL 9007 FS
Exterior decoration	ESG black glass (only with frame AT 110 P)
Optional	Fingerprint scanner BT 660, Black Edition set , SF 1702 - standing sash with ESG glass on the outside





### AAE 1626 B

6 mm aluminium plate with milling and black applications on the outside.

External handle	GM 516 ST
Colour	RAL 9007 FS (only with frame AT 110 P)
Optional	Fingerprint scanner BT 660, Black Edition set , SF 1702 - standing sash with ESG glass on the outside



### AAE 1627 B

6 mm aluminium plate with milling and black applications on the outside.

External handle	ZAE 216 B
Colour	RAL 9007 FS (only with frame AT 110 P)
Optional	Fingerprint scanner BT 670, Black Edition set , SF 1702 - standing sash with ESG glass on the outside





### AAE 1707 B

Enamelled ESG 6 mm glass and 3D mouldings on the outside.

External handle	ZAE 216 TF
Colour	RAL 9007 FS
Outer plate	RAL 9005 matt
Exterior decoration	ESG black glass (only with frame AT 110 P)
Exterior mouldings	RAL 9007 FS
Optional	Fingerprint scanner BT 660, Black Edition set , SF 1702 - standing sash with ESG glass on the outside

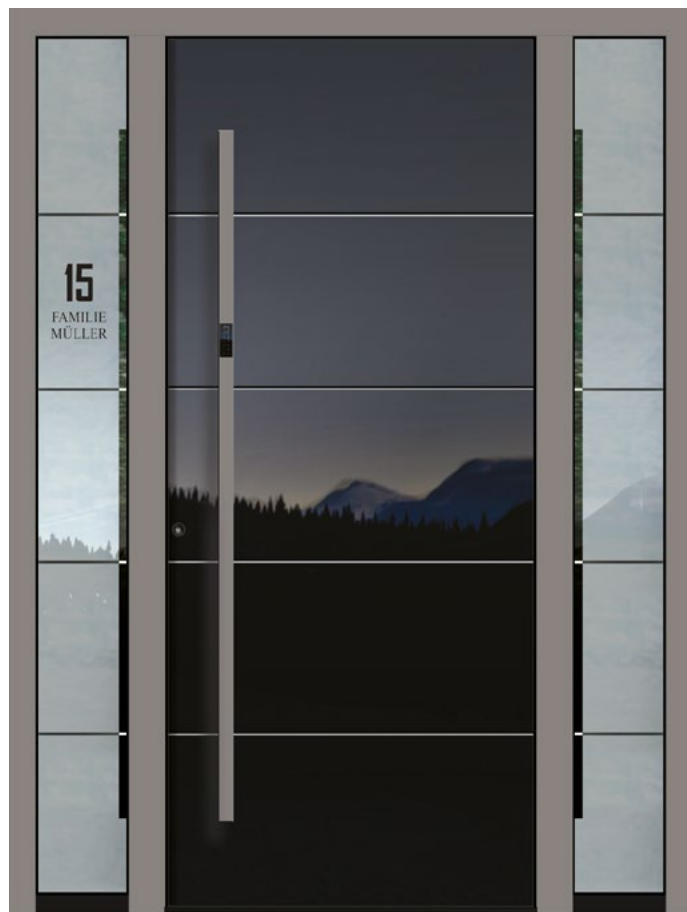


### AAE 1158

ESG enamelled glass 6 mm and fluted ground on the outside. Milling on the inside.

External handle	GM 516 ST
Colour	RAL 9007 FS
Outer plate	ESG black glass (only with frame AT 110 P)
Optional	Fingerprint scanner BT 660, Black Edition set , SF 1703 - standing sash with ESG glass on the outside





### AAE 1186

ESG enamelled glass 6 mm and fluted ground on the outside. Milling on the inside.

External handle	ZAE 216 TF
Colour	RAL 9007 FS
Outer plate	ESG black glass (only with frame AT 110 P)
Enlightens	ST 01 / WG / 400
Glass motif	MS 6871/S + house number
Optional	Fingerprint scanner BT 660, Black Edition set

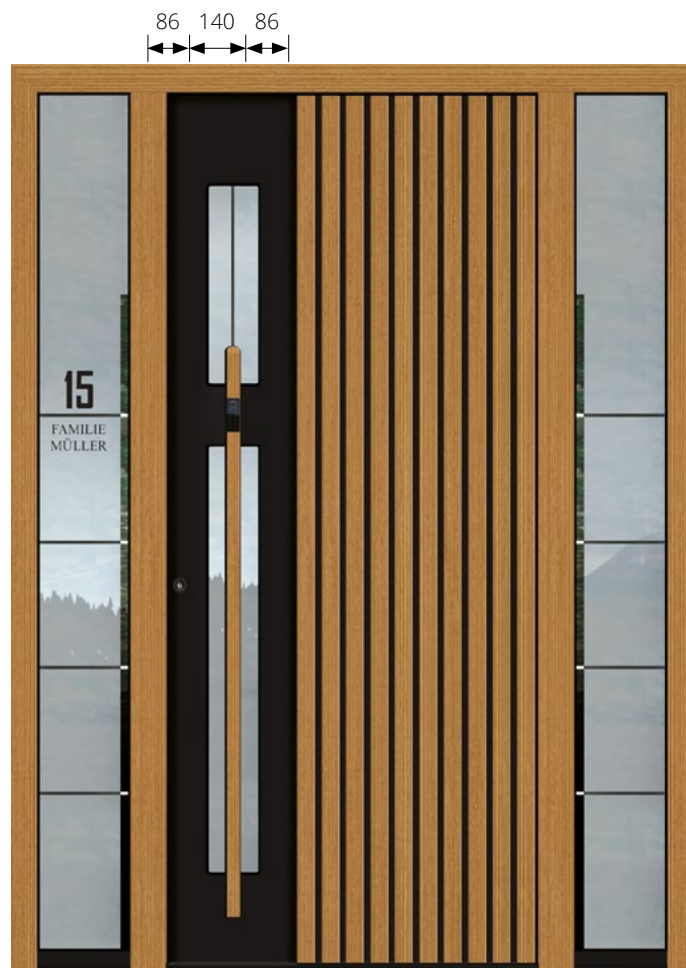


### AAE 1172

Enamelled ESG 6 mm glass on the outside. Milling on both sides. (only with frame AT 110 P)

Glass motif	MS 6484
External handle	ZAE 715
Colour	70 784 FS
Viewfinder	BT 19 E
Enlightens	ST 01 / WG / 400
Glass motif	MS 6484/S + house number
Optional	Fingerprint scanner BT 660





### AAE 1705 B

3D décor and mouldings on the exterior.

Glass motif	MS 6819
External handle	ZAE 200 ML TF
Colour	HD 211
Outer plate	RAL 9005 matt
Exterior decoration	RAL 9005 matt
Exterior mouldings	HD 211 (only with frame AT 110 P)
Enlightens	ST 01 / WG / 400
Glass motif	MS 6819/S + house number
Optional	Fingerprint scanner BT 660, Black Edition set ,



### AAE 1708

3D decor and mouldings on the outside. Milling on the inside.

External handle	GM 516 ST
Colour	RAL 9007 FS
Outer plate	RAL 9005 matt
Exterior decoration	RAL 9005 matt
Exterior mouldings	RAL 9007 FS (only with frame AT 110 P)
Enlightens	ST 01 / WG / 400
Glass motif	MS 6875/S + house number
Optional	Fingerprint scanner BT 660













### AAE 1719 BH

Black 3D insert and black appliqués on outside. Milling on the inside.

Glass motif	MS 6899
External handle	ZAE 211 B
Colour	DD 424
3D insert	RAL 9005 matt (only with frame AT 110 P)
Enlightens	ST 01 / WG / 400
Glass motif	MS 6899/S + house number
Optional	Fingerprint scanner BT 670, Black Edition set



### AAE 1717 B

Black 3D insert and milling with black appliqués on the outside.

External handle	ZAE 216 TF
Colour	RAL 9007 FS
3D insert	RAL 9005 matt (only with frame AT 110 P)
Enlightens	ST 01 / WG / 400
Glass motif	MS 6845/S + house number
Optional	Fingerprint scanner BT 670, Black Edition set





### AAE 1072 B

Enamelled ESG 6 mm glass on the outside. (only with frame AT 110 P)

Glass motif	MS 6805 + house number
External handle	ZAE 217 B
Colour	RAL 9005 matt
Outer plate	DD 424
Enlightens	ST 01 / WG / 400
Glass motif	MS 6805/S
Optional	Fingerprint scanner BT 670, Black Edition set



### AAE 1093

Enamelled ESG 6 mm glass on the outside. Milling on both sides.

Glass motif	MS 6556
Decoration	GE 123
External handle	ZAE 214 B
Colour	80 077 FS
Enlightens	ST 01 / WG / 400
Glass motif	MS 6556/S + house number
Optional	Fingerprint scanner BT 670



# Batch models



AGS 1501



ASS 1796



ASS 1730



# Top quality as standard

**PREMIUM**

from

**0,82**

W/m2K



**PREMIUM plus**

from

**0,61**

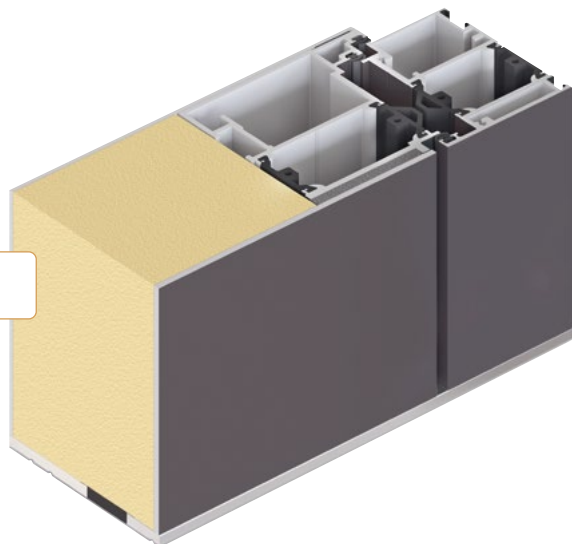
W/m2K





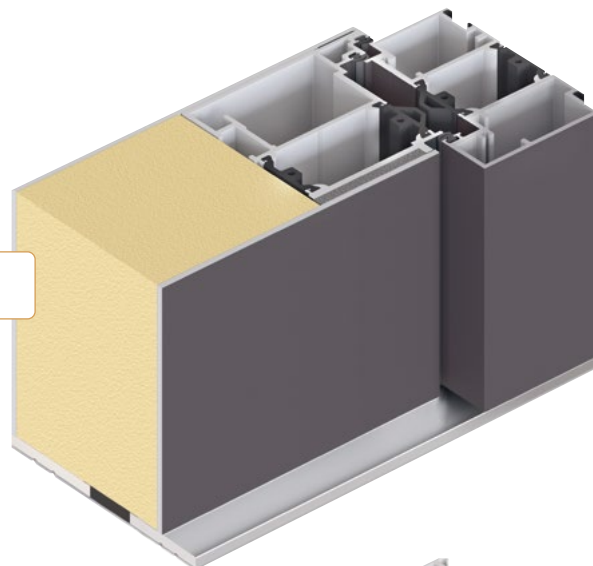
Standard  
profile

**AT 95**



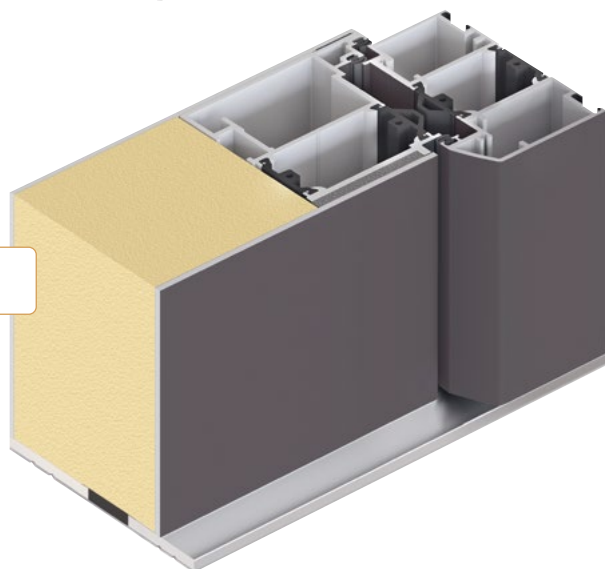
Square  
profile

**AT 110P**



Classic  
profile

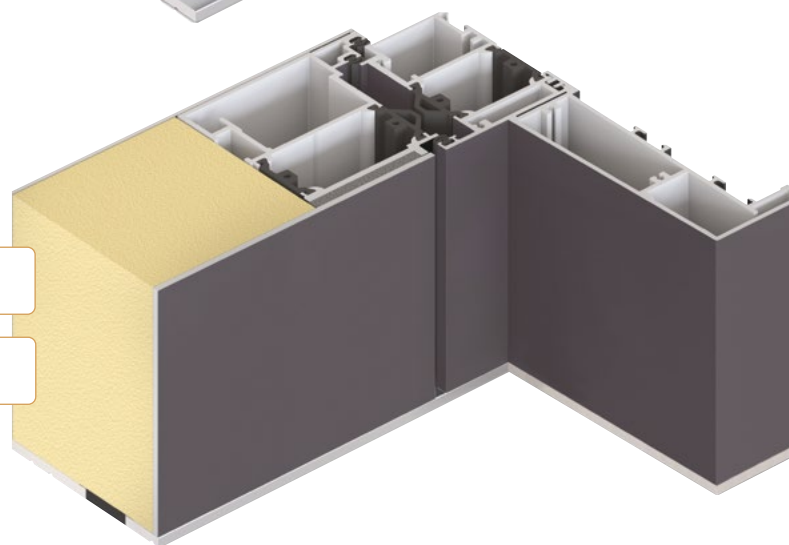
**AT 110**



Deep  
profile

**LP 200**

**LP 150**





# Top quality as standard

## 5-point lock

The distinguishing features of the premium entrance door collection are the premium features, which include: 5-point locking and deadbolt locking and an extremely robust stainless steel counter plate. The patented leaf design features an expansion layer and a chamber for electrical cables.

## Comfort and safety

The striker bar is part of the standard equipment of all locks. This increases the level of security and offers an adjustment range of +/- 2 mm for comfortable locking.

## Additional protection

Choose from a wide range of additional hardware options to increase burglary protection.







### Three 3D hinges

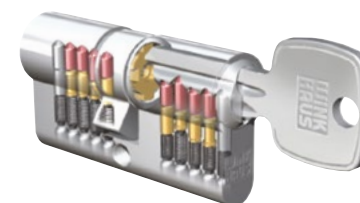
Available with 3 adjustable 3-part heavy-duty roller hinges in anodised EV1 or, optionally, in 16 standard colours.

the maximum opening angle is 180°



### Inset

Profile cylinder K 20 with emergency and anti-blocking function with 6 keys included



### Handle



**ZIE 71**  
stainless steel matte

### Rosette





# Top quality as standard



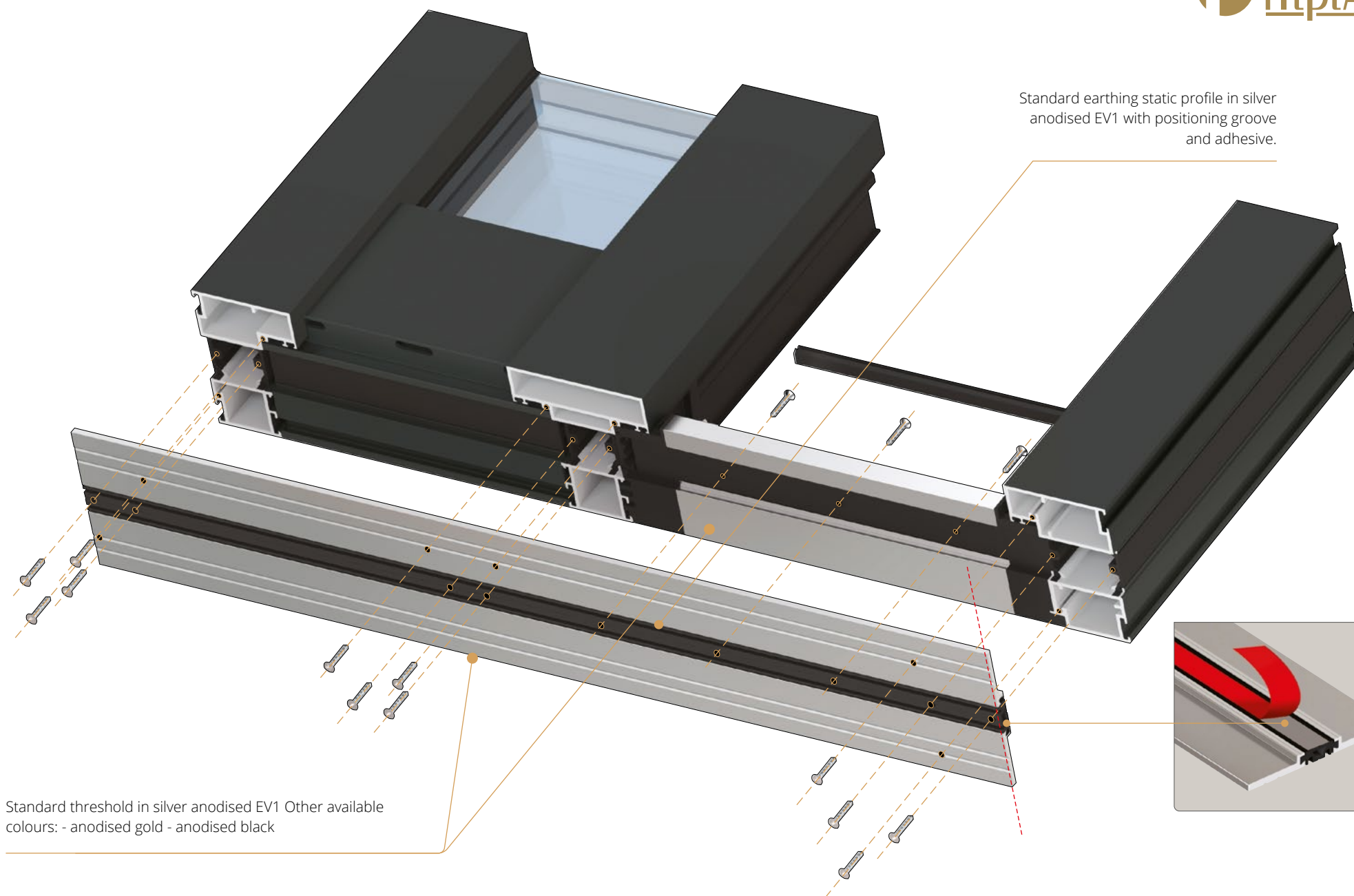
## Static soil profile

Mounted under the threshold, the static ground profile is characterised by an optimised, perfectly matching cross-section and positioning grooves. Standard construction colour: silver anodised EV1.

## New, improved design

The improved frame and sash design excels in all key aspects of static, thermal insulation and safety, delivering superior performance in each of these areas.



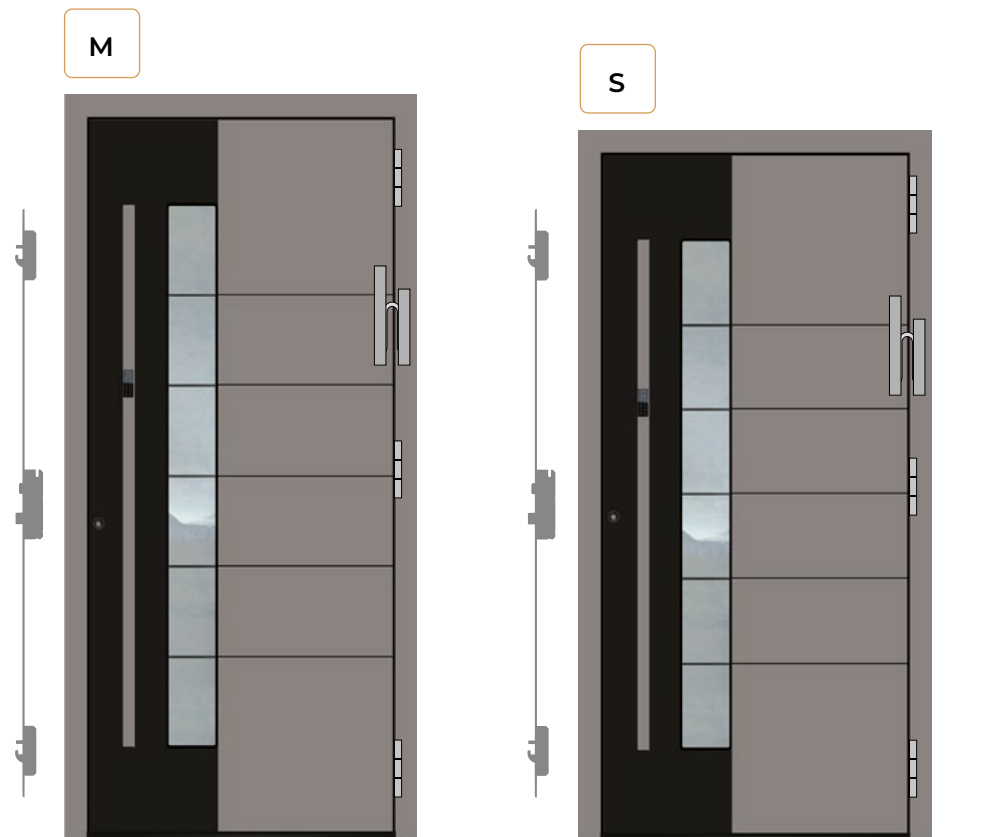




# Door sizes

The entrance doors of the Premium series are characterised by innovative technical solutions. Thanks to automatic geometric alignment, the glass size is adapted to the specific door height without additional costs.

The door can be made to a height of 2000 to 2950 mm and a width of up to 1400 mm.



AAE 1624 B

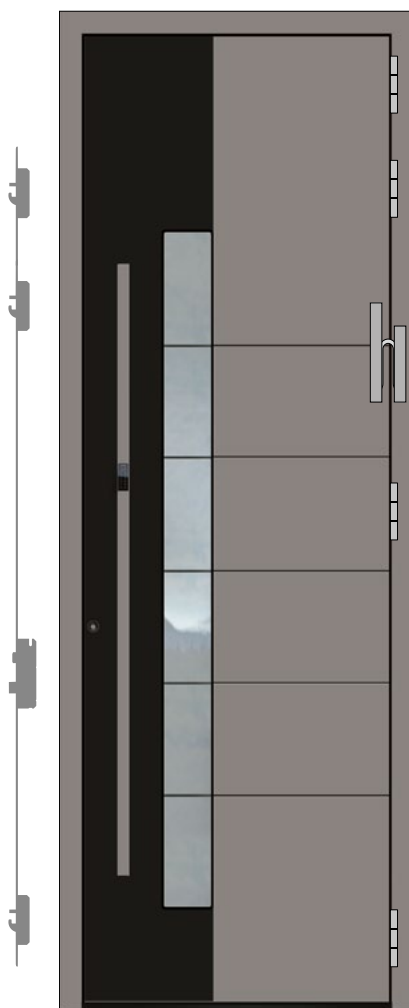
2151 mm - 2250 mm

1600 mm glass  
Hinges 3 pieces  
Standard lock BT 5 (1754 mm)  
Handle ZAE 215 - 1600 mm

2000 mm - 2150 mm

Glass 1500 mm  
Hinges 3 pieces  
Standard lock BT 5 (1754 mm)  
Handle ZAE 215 - 1500 mm



**JUMBO**


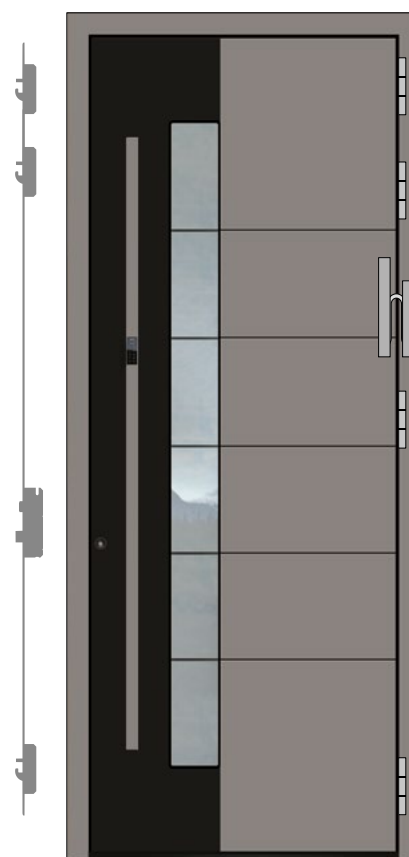
**2801 mm - 2950 mm**

Glass 2000 mm  
Hinges 4 pieces  
Standard lock BT 5 (2254 mm)  
Handle ZAE 215 - 1800 mm

**XXL**


**2751 mm - 2800 mm**

Glass 2000 mm  
Hinges 4 pieces  
Standard lock BT 5 (2254 mm)  
Handle ZAE 215 - 1800 mm

**XL**


**2501 mm - 2750 mm**

Glazing 1900 / 2000 mm  
Hinges 4 pieces  
Standard lock BT 5 (2254 mm)  
Handle ZAE 215 - 1800 mm

**L**


**2251 mm - 2500 mm**

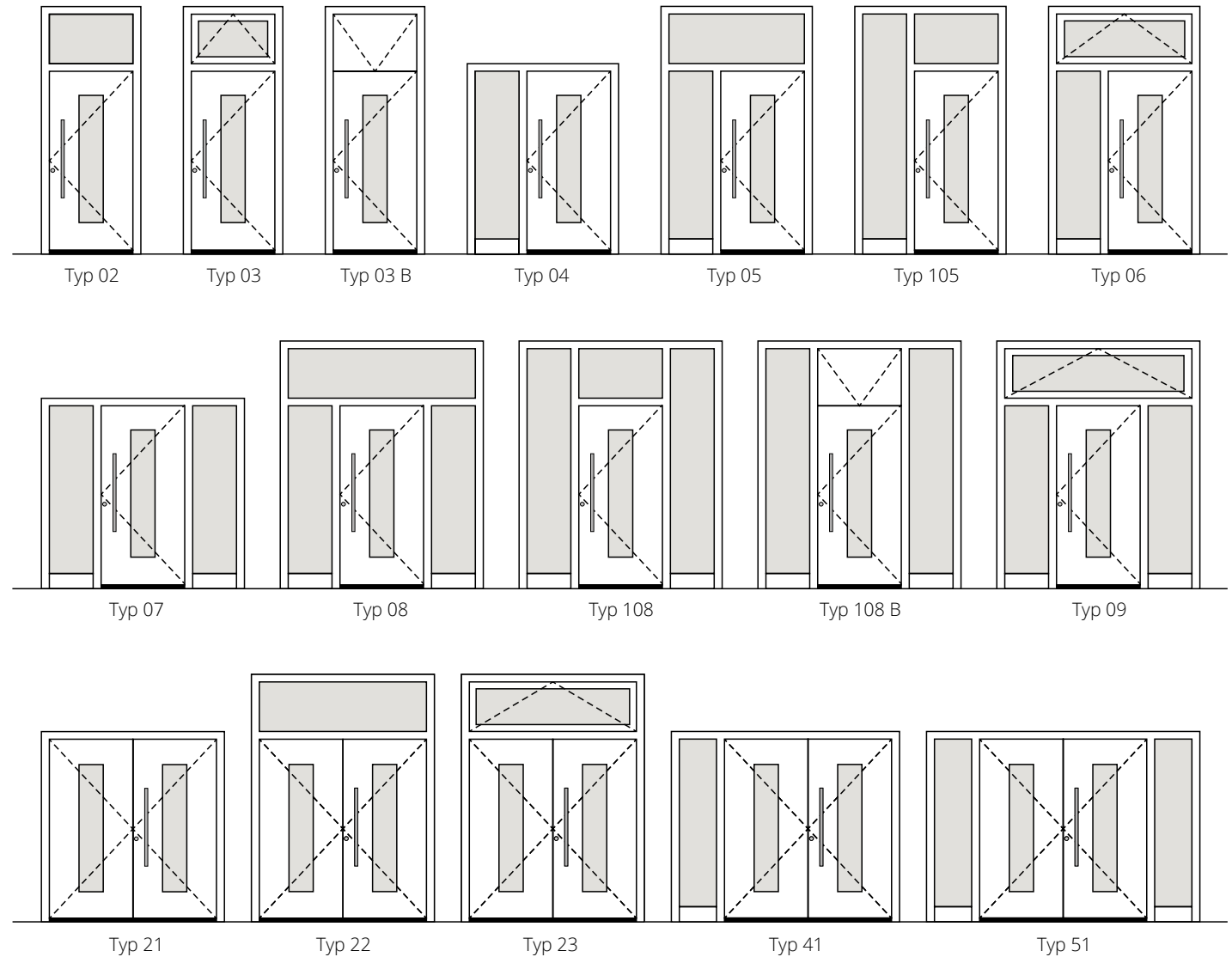
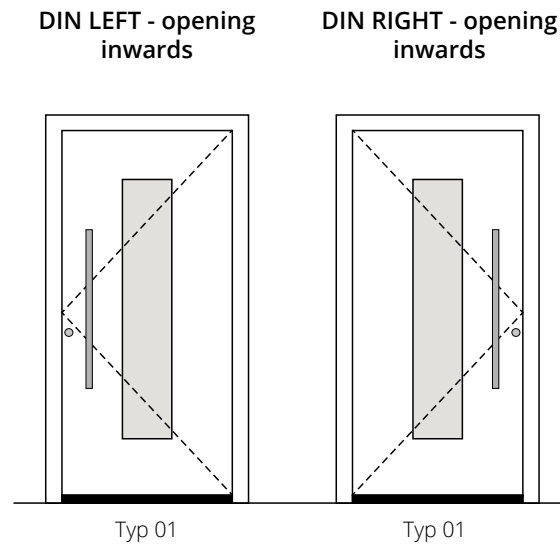
Glass 1700 / 1800 mm  
Hinges 3 pieces  
Standard lock BT 5 (2004 mm)  
Handle ZAE 215 - 1700 mm



# Systems

## Configuration overview - external view

All models in the Premium Series offer versatile configurations, including combinations with side and top lights or the ability to open the door in any DIN direction. For larger door sizes, there is the option of joining the structure with clips and gaskets at an additional cost.





# Personalisation



**AGE 1351**

Standard model



**AGE 1351**

Modified model

## Personalisation

If you are looking for something different from one of the ready-made models of the Premium Collection, we will create a unique bespoke door for you according to your design sketch.

## Important

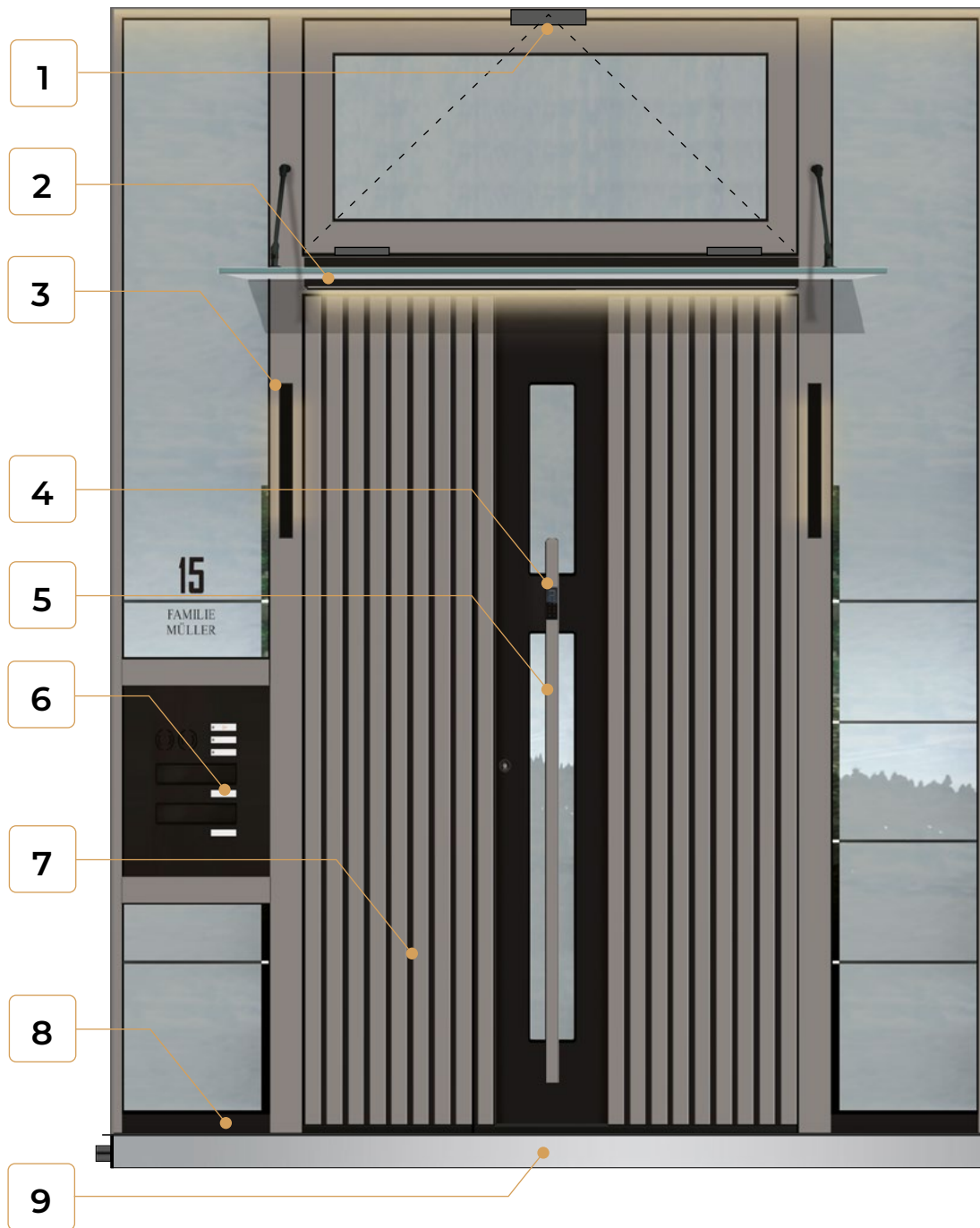
Modifications are applied to existing models and involve, for example, removing grooves, adjusting the position of the glass or creating a mirror effect. Extended modifications include, for example, increasing the size of the glass, rearranging stainless steel elements or adding an additional decorative panel.



Extensive retrofit  
options







### Extensive retrofit options

The door can be retrofitted with additional elements, such as LED lighting, a fingerprint reader or a sub-threshold extension with a drainage system.

1. Tiltable motorised rooflight
2. Glass canopy with LED lighting
3. LED column lighting
4. Fingerprint reader
5. Aluminium handle with optional LED illumination
6. Side light with integrated RENZ post-box system
7. 3D applications
8. Slim bottom profile
9. Sub-road widening with drainage system



# Decorative overlays

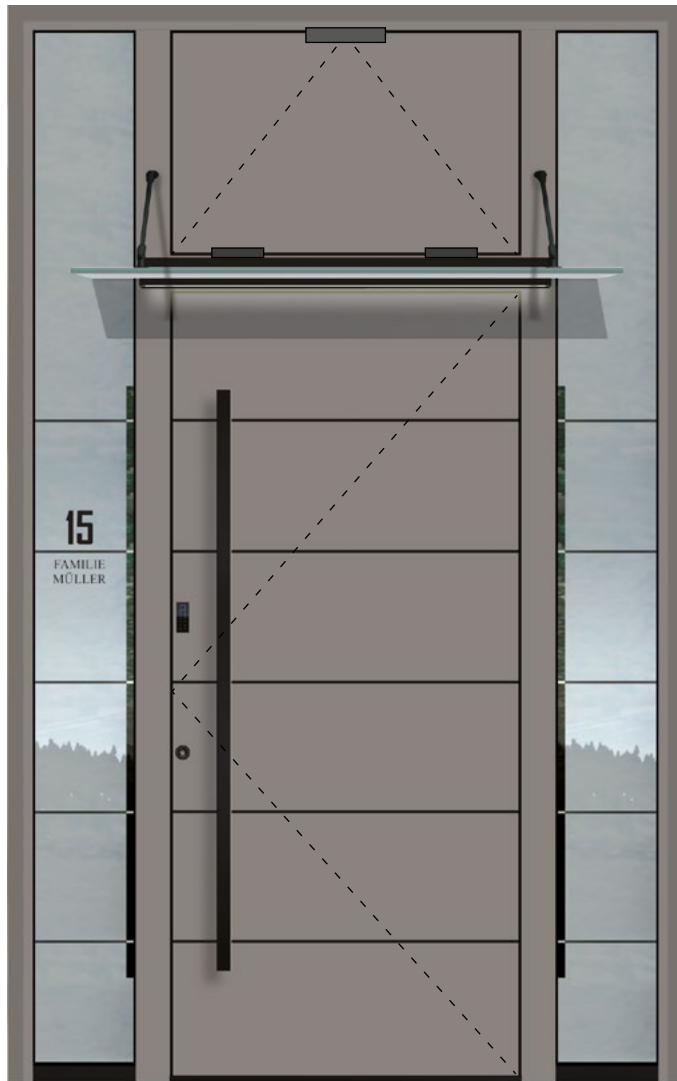
## Decorative overlays

The decorative overlay on the door leaf gives the door an elegant and modern design. The overlay has been designed so that it can be easily removed. The overlay can be used on doors from 2700 to 3200 mm high.

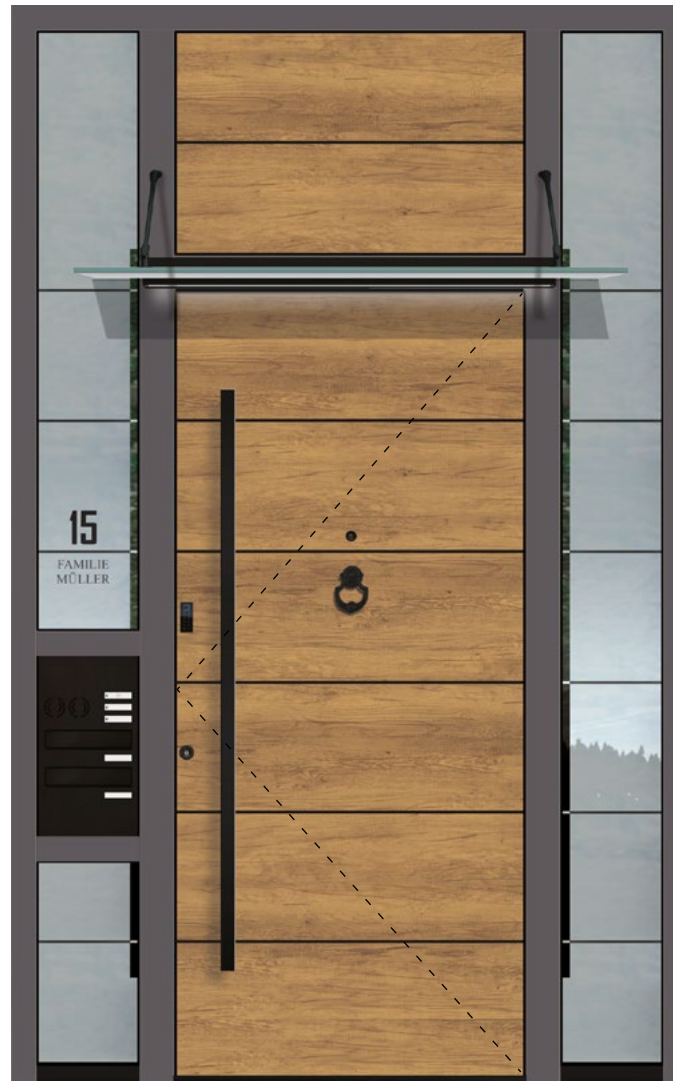


AGE 1011 BH





AGE 1011 B



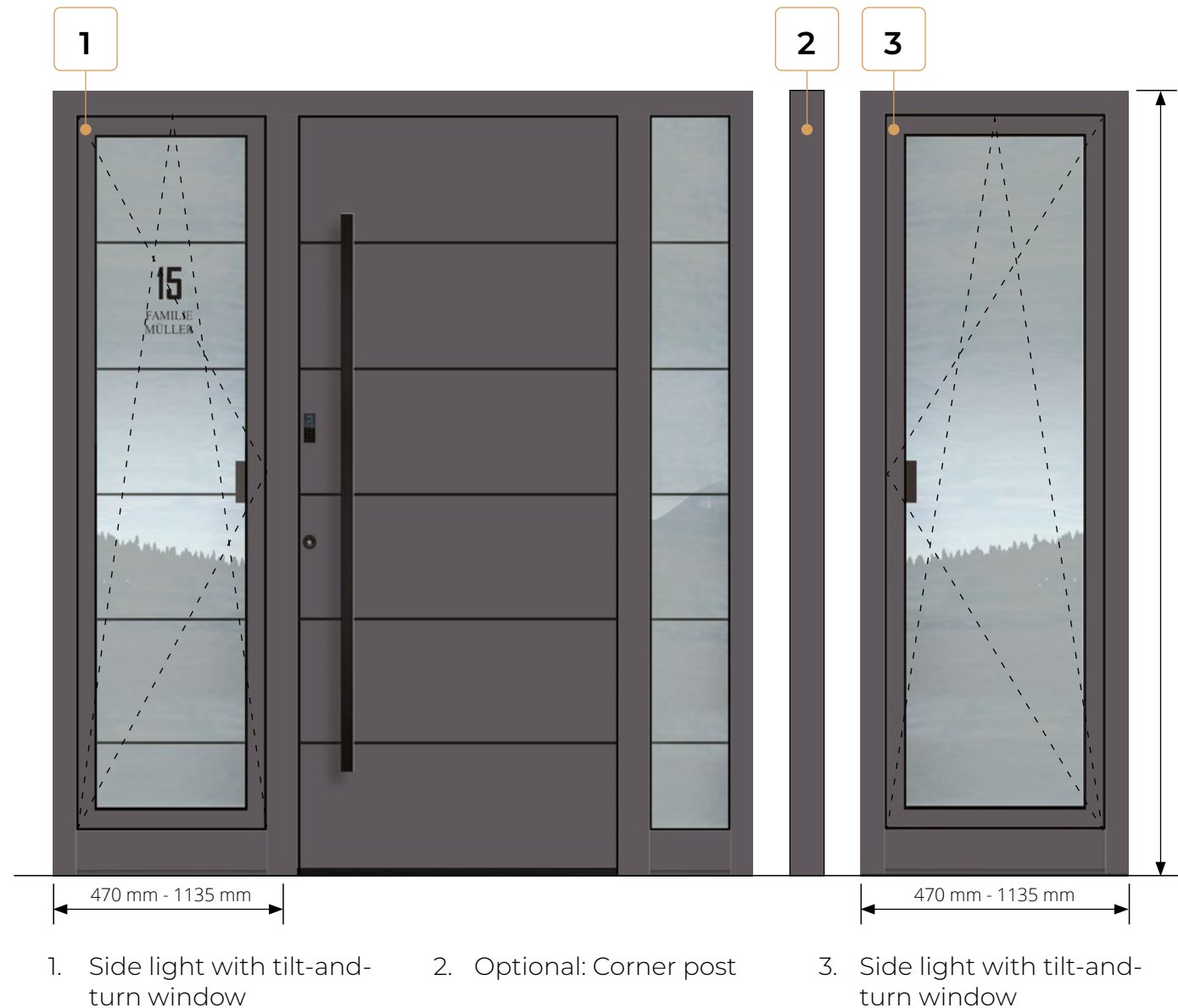
AGE 1011 BH



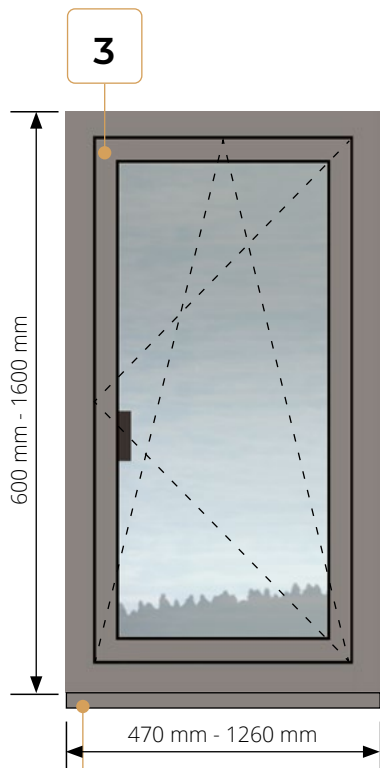
# Windows in fanlights

## Tilt&Turn window

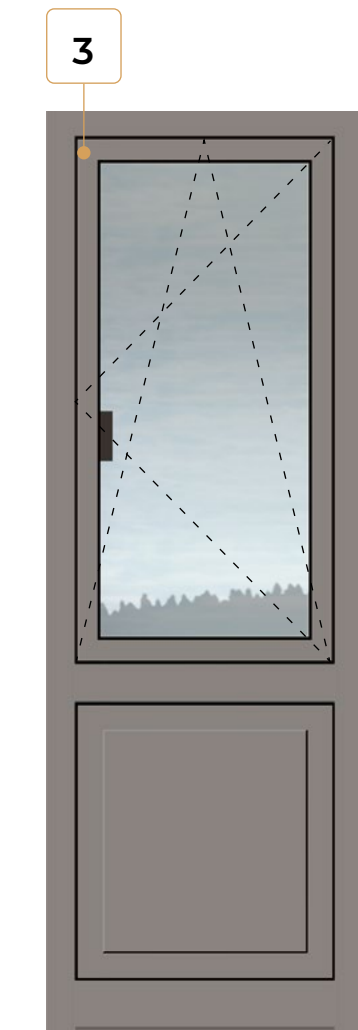
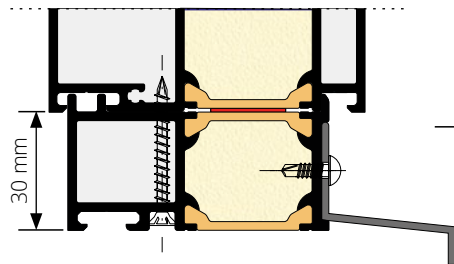
Tilt and turn windows in doors are an ideal addition in corridors, hallways or rooms that require adequate ventilation. The triple-glazing package and concealed window hardware are constructed with components that provide a high level of security. The windows can be manufactured with a threshold profile and drainage channel.







**4** Sill profile



SmartActive handle





# Doors opening outwards



AGE 1041 B

## AT 95 A

Premium series models are also available in an outward-opening version. The designs have the same performance and characteristics as inward opening doors. They are also compatible with most additional accessories.





## PREMIUM

from

**0,94**

W/m<sup>2</sup>K



## PREMIUM plus

from

**0,61**

W/m<sup>2</sup>K



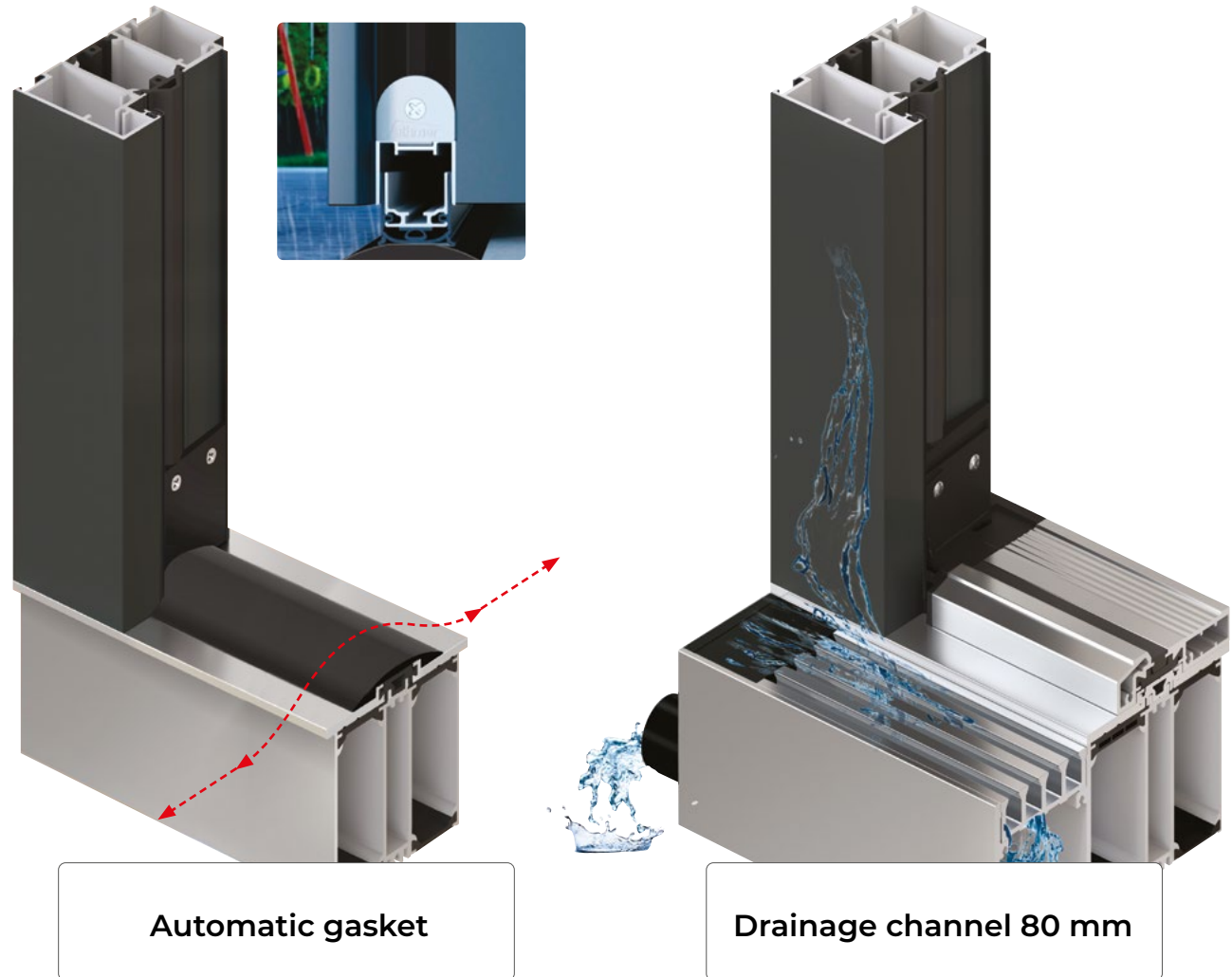
# Technical information

## Automatic gasket

- The seal used provides sound insulation and high rain and wind tightness.
- Easy maintenance, simple dismantling
- Tool-free adjustment
- Automatic height compensation
- Parallel lowering with automatic levelling
- Standard static floor profile

## Drainage channel

The drainage channel provides controlled drainage of even large volumes of water in front of the entrance to the house. It prevents puddles from forming within the façade and protects the interior of the building from moisture infiltration.







**Hidden hinges**



**Slim bottom profile 50 mm**

### **Hidden hinges**

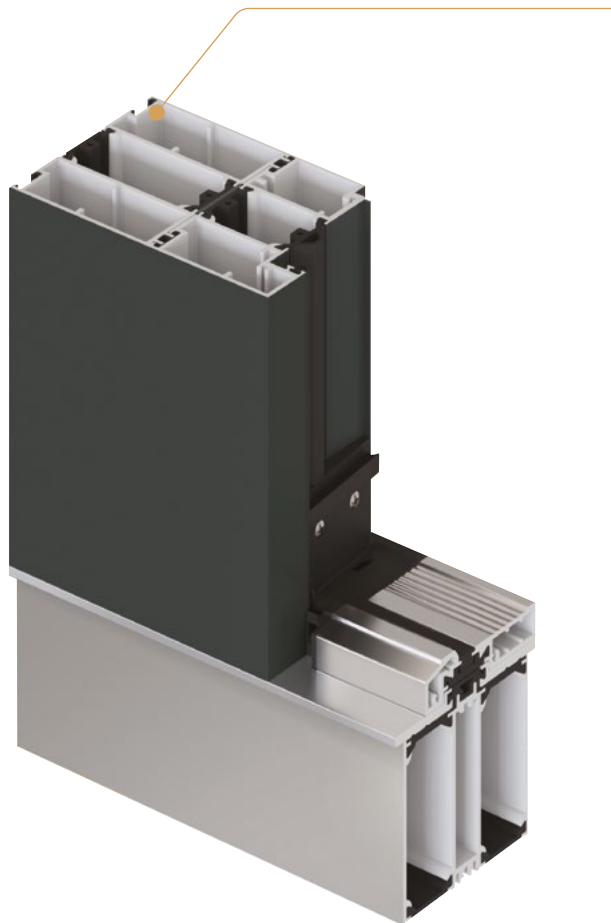
The concealed hinges give the door a modern, streamlined shape. The solution combines sophisticated design with durable, robust technology that is capable of supporting weights of up to 120 kg. The two-part hinge design facilitates easy attachment and removal of the door leaf. The user-friendly three-plane adjustment system further enhances convenience.

the maximum opening angle is 105°



# Profile extensions

Extension profile  
20 / 40 / 80 mm



## Extension profile

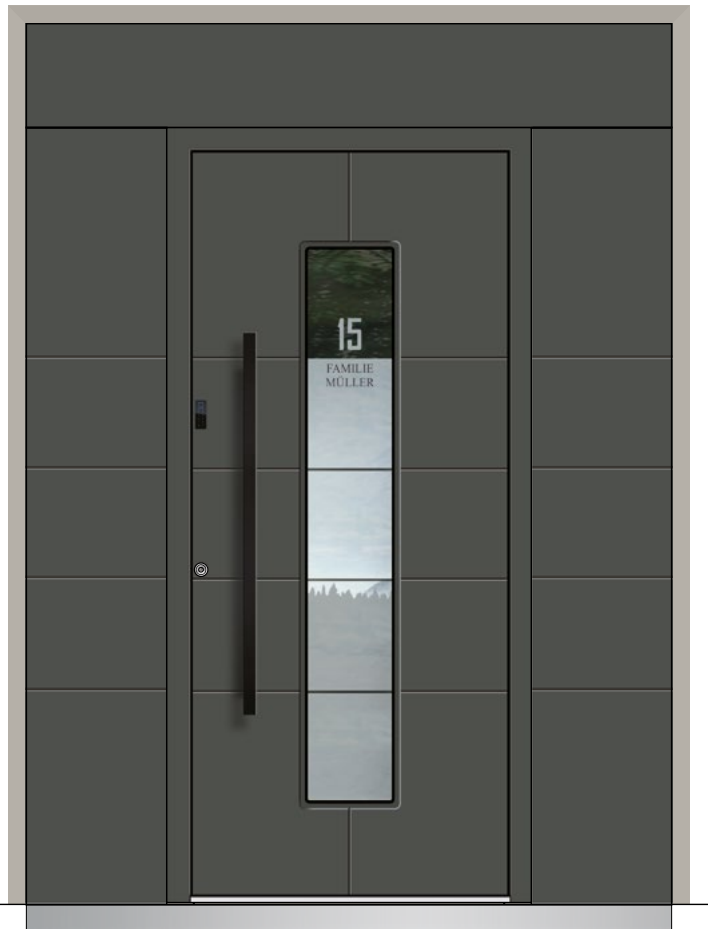
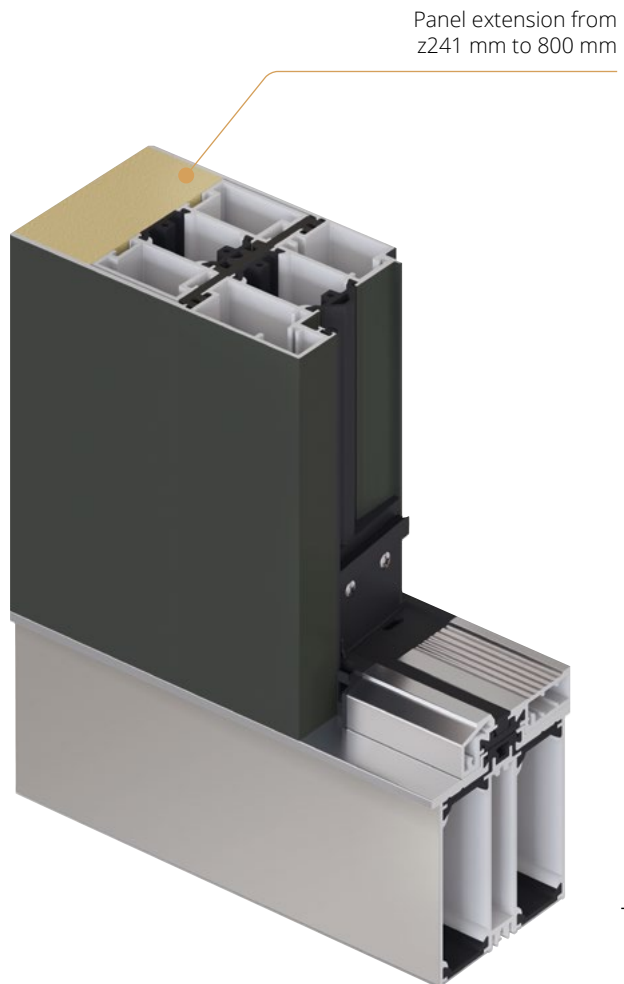
The doors in the Premium collection are suitable for installation in both new construction and renovation buildings. The extension profiles offered in the supplementary programme allow the construction to be adapted to different installation requirements. They ensure exceptional stability of the entire structure and a high level of thermal insulation.

## Static soil profile

The base profile is made of anodised aluminium, 2.3 mm thick, and is fitted with a double thermal break. It facilitates the installation of the entrance door directly onto a floor that has not yet been fully finished.



# Panel extensions

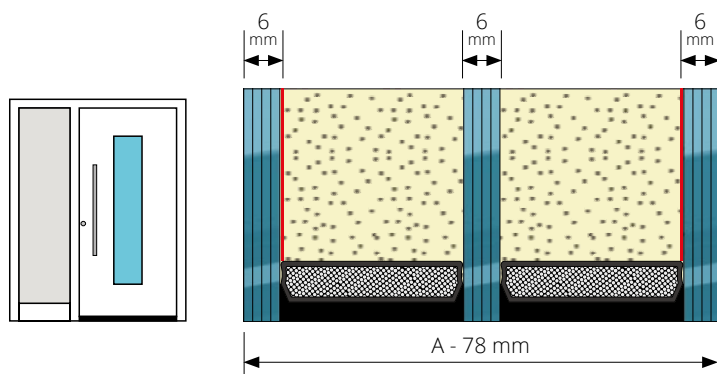


## Panel extensions

When used instead of glass fanlights, they can be made of the same material as the leaf. This makes the door appear even larger and gives the building facade an elegant design element that forms a coherent whole with the door structure.



# Glass



**A**

## Glazing packet in casement

internal part:

- transparent float glass with metal coating
- 6 mm clear laminated glass with metal coating

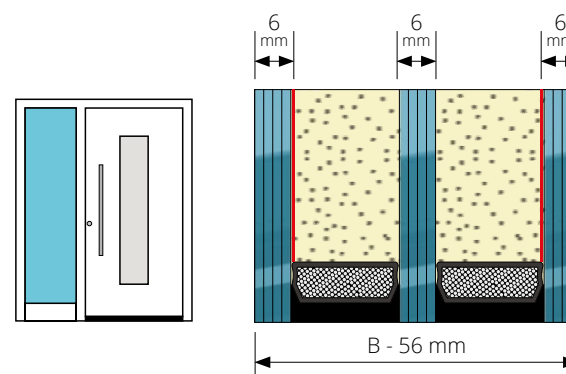
middle section:

- clear float glass with or without motif
- ornamental glass
- coloured glass with or without motif part

external:

- clear float glass with metal coating
- 6 mm clear laminated glass with metal coating

All other glass combinations are available on request.



**B**

## Glazing package in rooflights

internal part:

- transparent float glass with metal coating
- 6 mm clear laminated glass with metal coating

middle section:

- clear float glass with or without motif
- ornamental glass
- coloured glass with or without motif part

external:

- clear float glass with metal coating
- 6 mm clear laminated glass with metal coating

All other glass combinations are available on request.



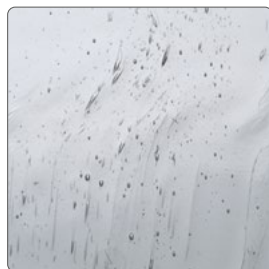
G2



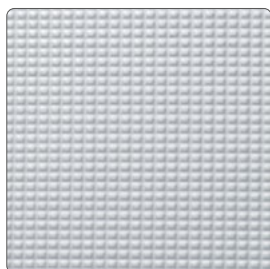
Ornament 504 white



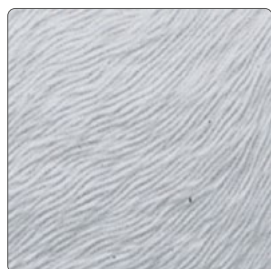
Kathedral white



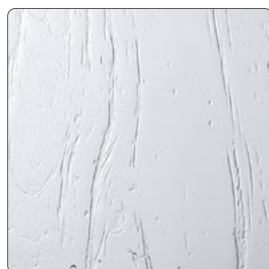
Altdeutsch K white



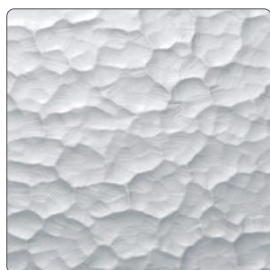
Ornament 597 white



Chinchilla white



Gothik white



Ornament 523 white

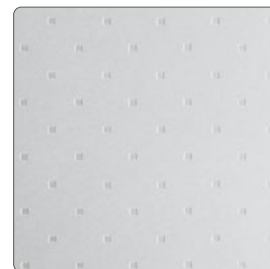


Gussantik white



Delta white

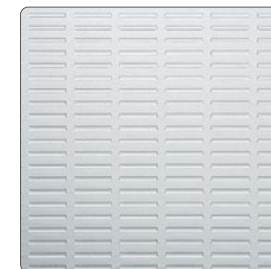
G4



Madras Pave white



Mastercarre white



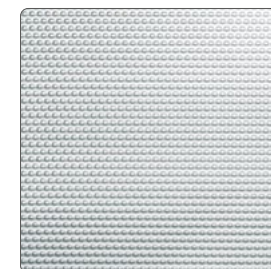
Masterray white



Madras Uadi white



Masterligne white



Masterpoint white



ESG Satinato green



Satinato white



ESG Satinato blue



# Colours

## Hinge colours

The hinges available as standard in colour groups F0 and F1 ensure high aesthetics and interior colour harmony. Anodised EV1 powder-coated hinges in colour groups F2 and F3 are available at an additional cost.



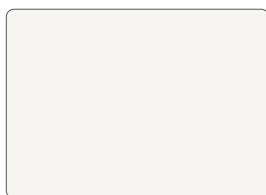
**10-year**  
guarantee

**F0**

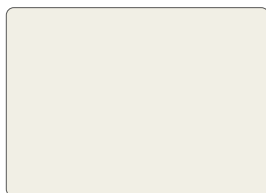


RAL 9016 GLOSS  
traffic white

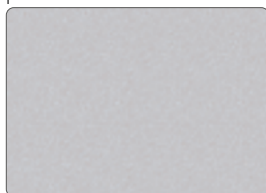
**F1**



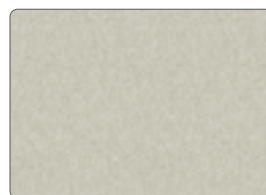
RAL 9016 FS  
traffic white



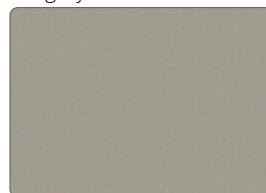
RAL 9010 FS  
pure white



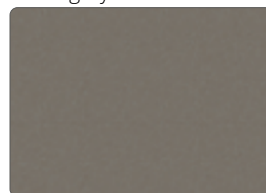
RAL 9006 FS  
white aluminium



RAL 7044 FS  
silk grey



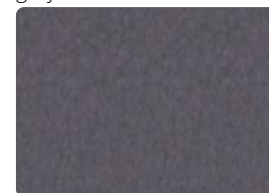
RAL 7030 FS  
stone grey



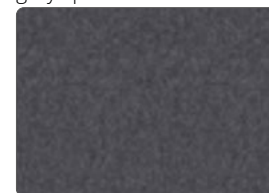
RAL 7039 FS  
quartz grey



RAL 9007 FS  
grey aluminium



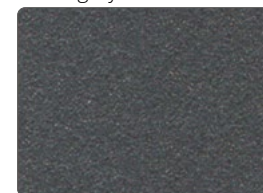
70 784 FS  
grey sprenkel



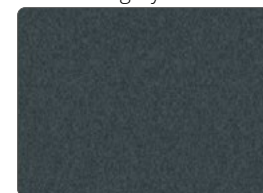
80 077 FS  
DB 703



RAL 7043 FS  
traffic grey



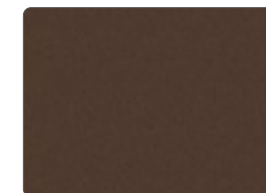
71 334 FS  
anthracite grey



RAL 7016 FS  
anthracite grey



RAL 8007 FS  
fawn brown



RAL 8014 FS  
sepia brown



RAL 8022 FS  
dark brown

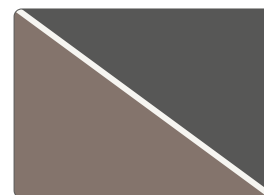


# Matt colours

## Standard gasket colour

The silicone glazing seals have a dark, anthracite colour, which has been chosen to blend in perfectly with the colour of the glazing packet spacers.

F5



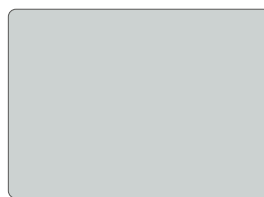
any on request



F2



RAL 9016 MATT  
traffic white



RAL 7035 MATT  
light grey



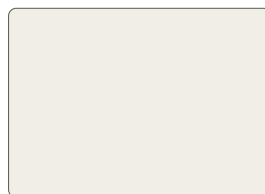
RAL 7005 MATT  
mose grey



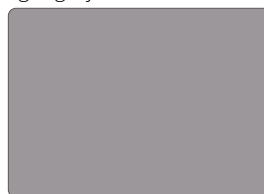
RAL 8003 MATT  
clay brown



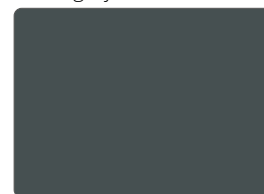
RAL 3004 MATT  
purple red



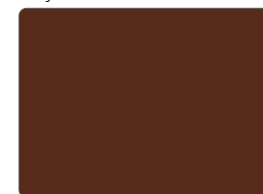
RAL 9010 MATT  
pure white



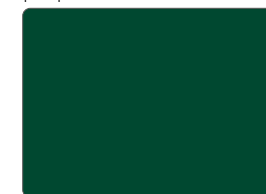
RAL 7036 MATT  
platinum grey



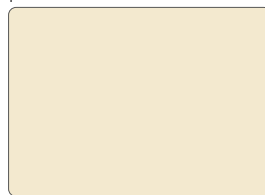
RAL 7012 MATT  
basalt grey



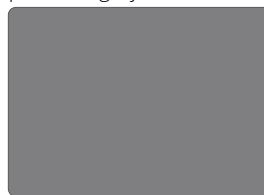
RAL 8016 MATT  
mahogany brown



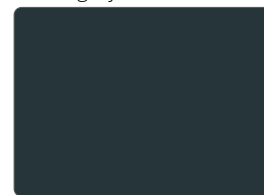
RAL 6005 MATT  
moos green



RAL 1013 MATT  
oyster white



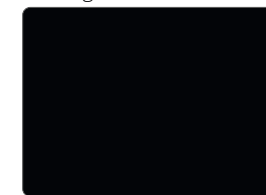
RAL 7037 MATT  
dusty grey



RAL 7016 MATT  
anthracite grey



RAL 8017 MATT  
chocolate brown



RAL 9005 MATT  
deep black

F5

Other RAL colours in matt, glossy and fine structure are available at an extra charge

**10-year**  
guarantee

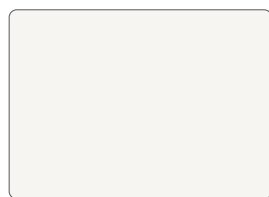


# Special colours

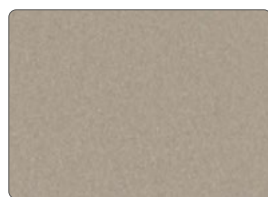
## F3 - Series 68

The exterior colour of a premium door retains its durability despite intensive exposure to external influences such as salty sea air, high levels of sunlight or heavy smog. The 68 series colours are the optimum choice for powder-coated doors used in harsh climatic conditions.

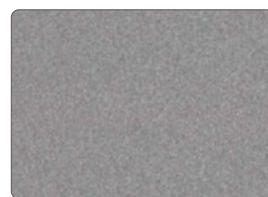
F3



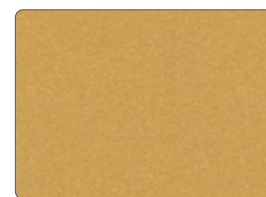
68/10591  
bianco 4601



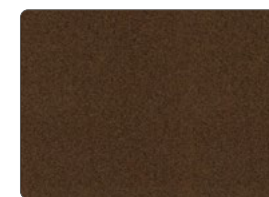
68/90512  
C31 anodized



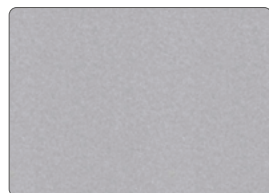
RAL 7005 MATT  
mose grey



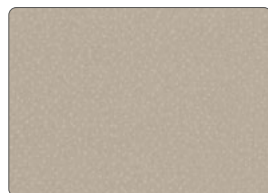
68/72142  
argento 4702



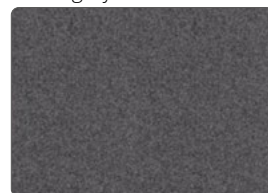
68/60960  
C34 anodized



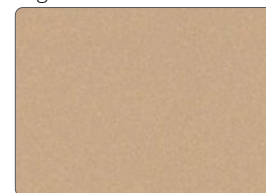
68/90510  
CO anodized



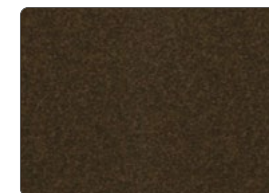
68/15236  
champagne



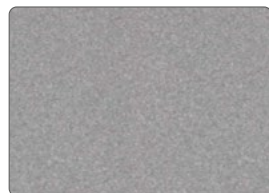
68/72143  
dark blue-grey anodized



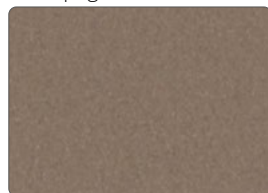
68/15237  
deore 4602



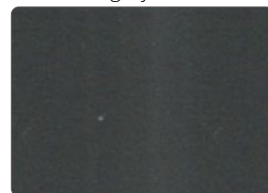
68/60964  
deore 4603



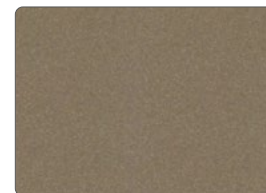
68/72141  
argento 4601



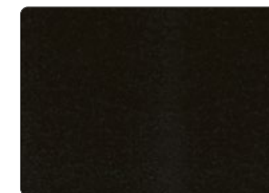
68/72144  
terra 4602



68/72147  
grey classic 4602



68/15235  
C32 anodized



68/80479  
C35 anodized

**20-year**  
guarantee



# Wood and design

F4



HD 221  
oak white



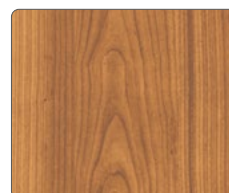
HD 206  
fine golden oak



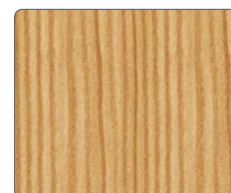
HD 213  
douglas fir



HD 229  
teak



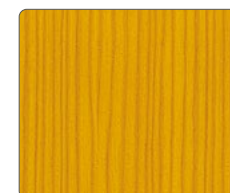
HD 228  
cherry light



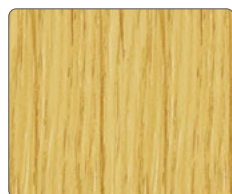
HD 211  
mountain pine



HD 222  
mountain pine honney



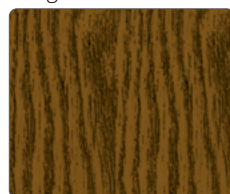
HD 212  
oregon



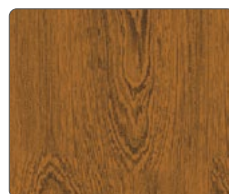
HD 209  
bright oak



HD 224  
oak fineline



HD 207  
dark oak



HD 205  
knotty golden oak



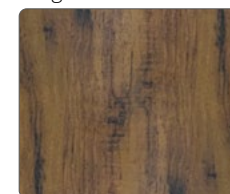
HD 223  
rustic oak



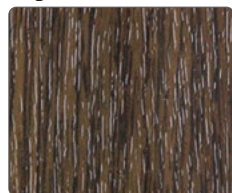
HD 202  
rosewood



HD 227  
walnut



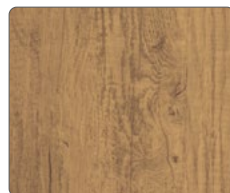
HD 225  
rustic walnut



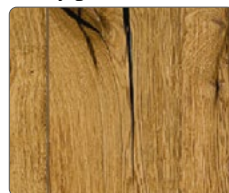
HD 210  
bog oak



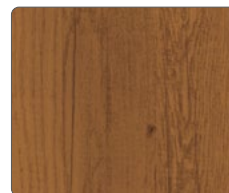
HD 204  
mahogany



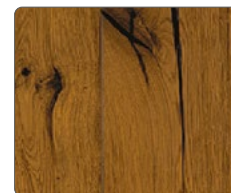
DD 424  
oak fineline rustic bright



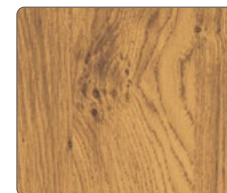
DD 415  
bright split oak



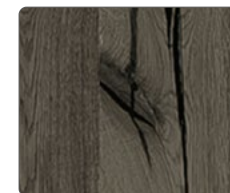
DD 425  
oak fineline rustic dark



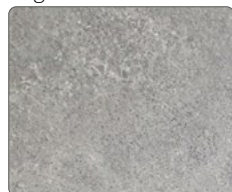
DD 416  
dark split oak



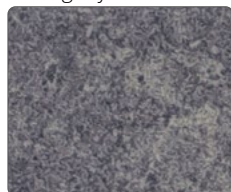
DD 426  
bright mountain oak



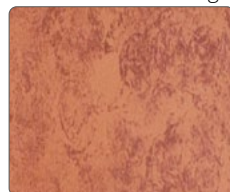
DD 417  
split oak antique



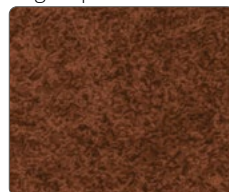
DD 423  
natural concrete



DD 421  
mineral grey



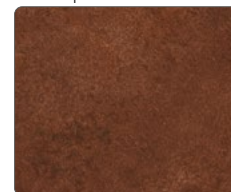
DD 406  
copper



DD 422  
mineral brown



DD 402  
rust



DD 420  
rust natur



# Closure systems

Closing systems include a rigid chain locking knob that allows a gap to be left between the leaf and the frame. This allows the door to be swung open without the risk of someone intruding inside. There is also a choice of, among other things, a multi-point automatic locking system made of stainless steel, which contains four locking elements that are mechanically activated when the door leaf comes into contact with the striker strip in the frame.

## Door opening lock



**BT 51**  
stainless steel  
matte



**BT 52**  
varnished black



**BT 53**  
stainless steel  
polished

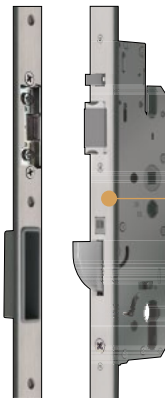


**BT 54**  
gold coated

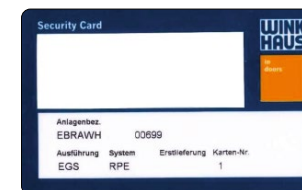
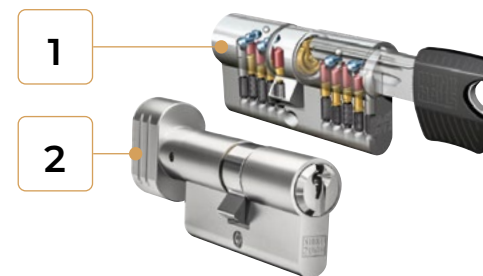
## BTS 5 TSH



## ATM 5



## Inserts



1

### Profile insert

with security card and set of 6 keys

2

### Profile insert with knob

with security card and set of 6 keys



# InoSmart

## BT 610

on a stainless steel handrail

## BT 620

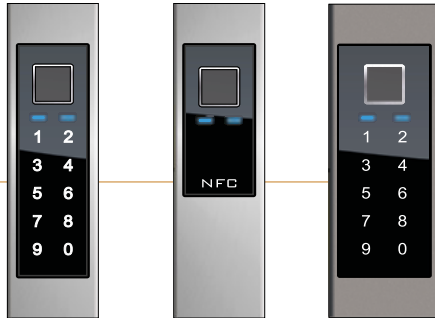
on a stainless steel handrail

## BT 670

on the door leaf

## BT 660

on aluminium handle



## Complete inoSmart

- 5-point rotary bolt with electromechanical drive from stainless steel cover strip
- Multi-point locking (FZG) with 6 keys
- Day/night mode
- Fingerprint with keypad code
- NFC (smartphone)
- Anti-panic safety escutcheon
- Control via smartphone app (Android or Apple)
- Cable connection to the control unit

Once the front door is closed, it locks automatically. It can be unlocked by entering a code or using a fingerprint.

In addition, the GENIUS COMFORT fast opening function allows the door to be opened simply by pressing the internal button located on the door.



## Fuse box

- With integrated 24 V/220 V transformer
- Automatic protection and current switch 230 V, AC 50/60 Hz
- Prepared for intercom and second relay

## Electric strike

- In combination with electric door lock BT 7
- Lock remains in daytime mode with locking function

## Selection of door operation mode (day or night):

Daylight mode - white LED

The door is closed but the lock is not locked. A simple push on the handle is sufficient to open the door. This mode of operation is recommended for doors in facilities with heavy traffic.

Night mode - blue LED

The lock automatically locks whenever the door is closed. The door is locked and bolted, requiring unlocking before it can be opened.

## CB function (optional)

When the entrance door is closed, it is automatically locked. Unlocking is done, for example, by pressing a button from the inside or from the outside using an access control system.



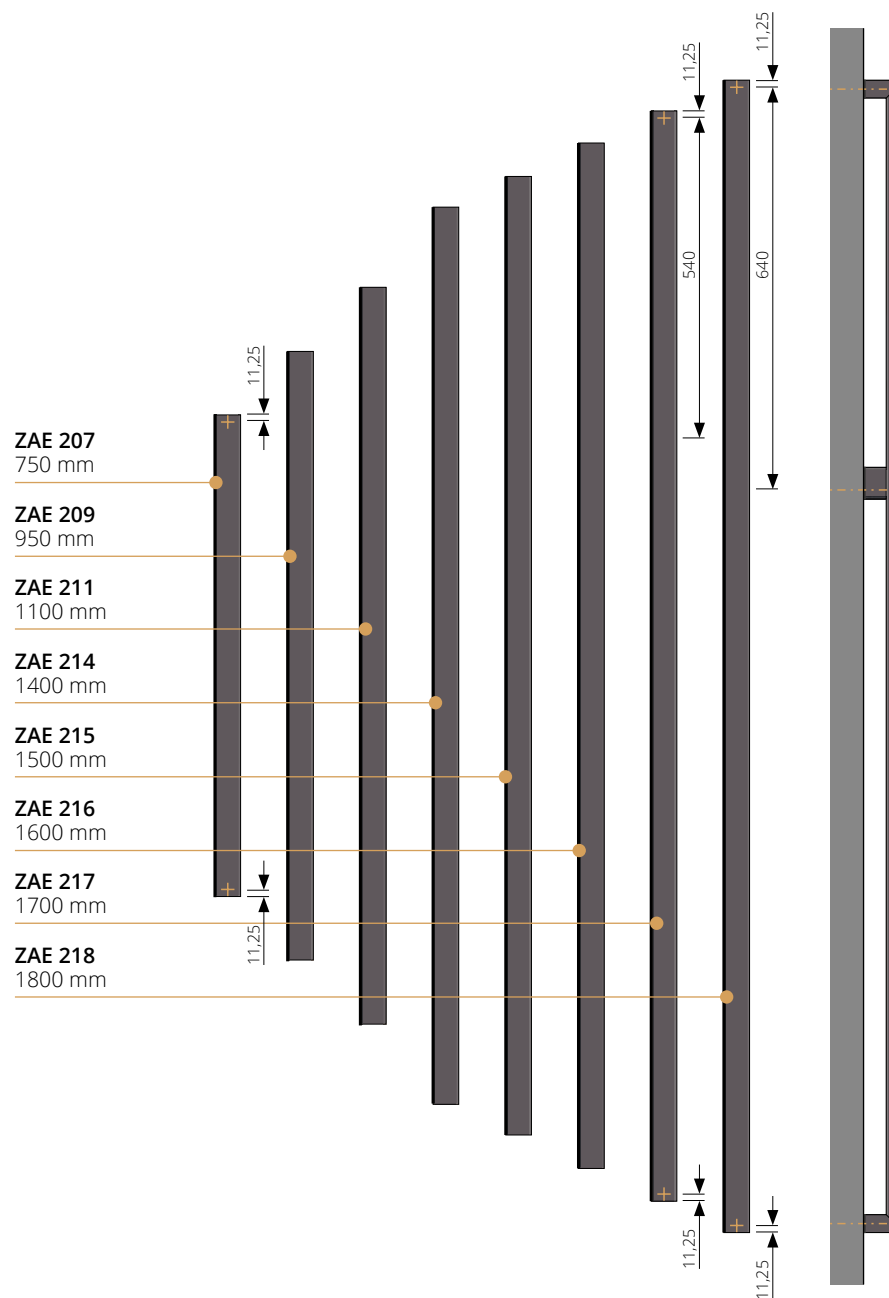


# Grips

## 200 series



- in door colour
- stainless steel imitation
- black (B)
- different colour (AF)



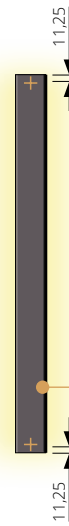
Optional: LED spotlight



## 200 series



LED column  
lighting



**DB 240**  
400 mm

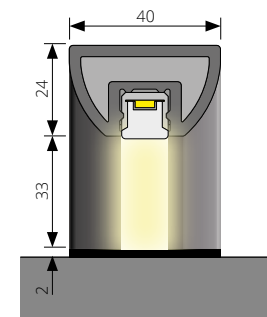
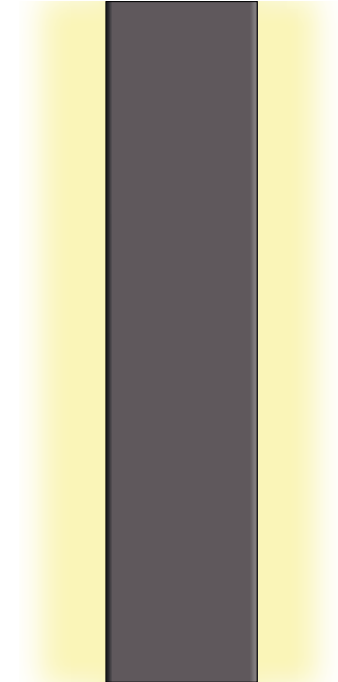
**DB 250**  
500 mm

**ZAE 240**  
400 mm

**ZAE 250**  
500 mm

**ZAE 260**  
600 mm

**ZAE 270 ML**  
601 - 1150 mm



**Optional:** LED linear  
lighting

- in door colour
- stainless steel imitation
- black (B)
- different colour (AF)



# Grips

## 600 series



stainless steel matte

**ZAE 607**  
750 mm

**ZAE 609**  
950 mm

**ZAE 611**  
1100 mm

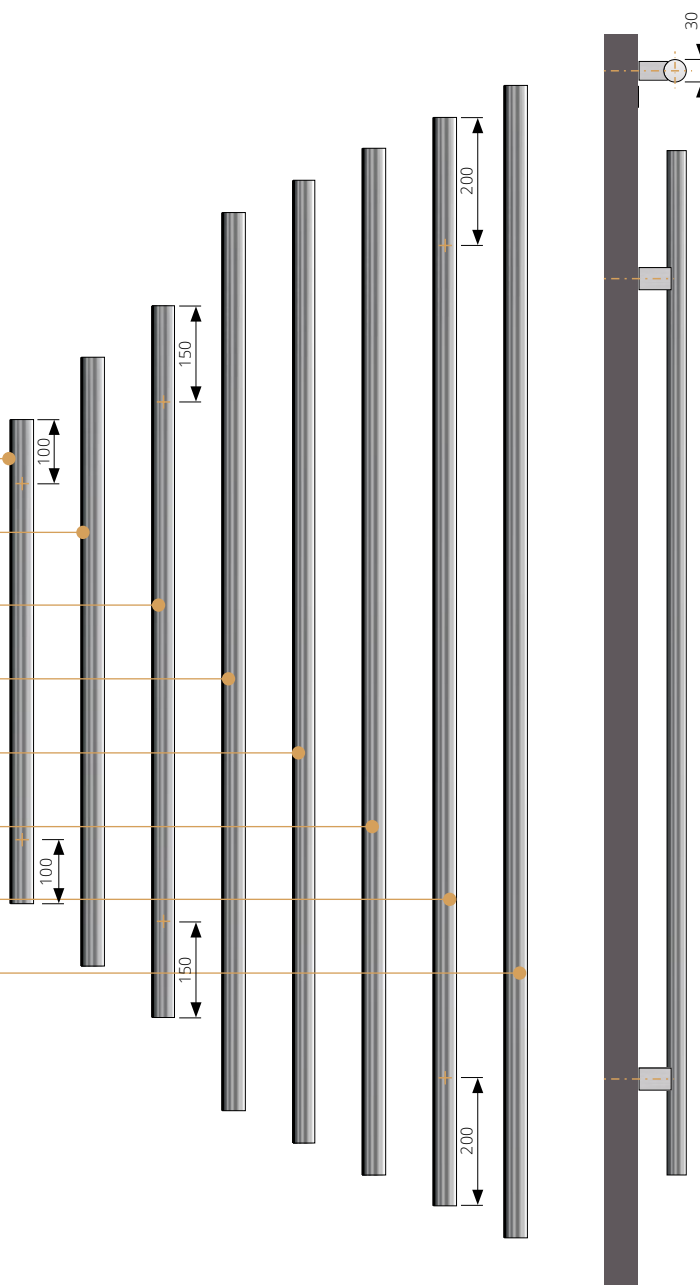
**ZAE 614**  
1400 mm

**ZAE 615**  
1500 mm

**ZAE 616**  
1600 mm

**ZAE 617**  
1700 mm

**ZAE 618**  
1800 mm





**700 series**



stainless steel matte

**ZAE 707**  
750 mm

**ZAE 709**  
950 mm

**ZAE 711**  
1100 mm

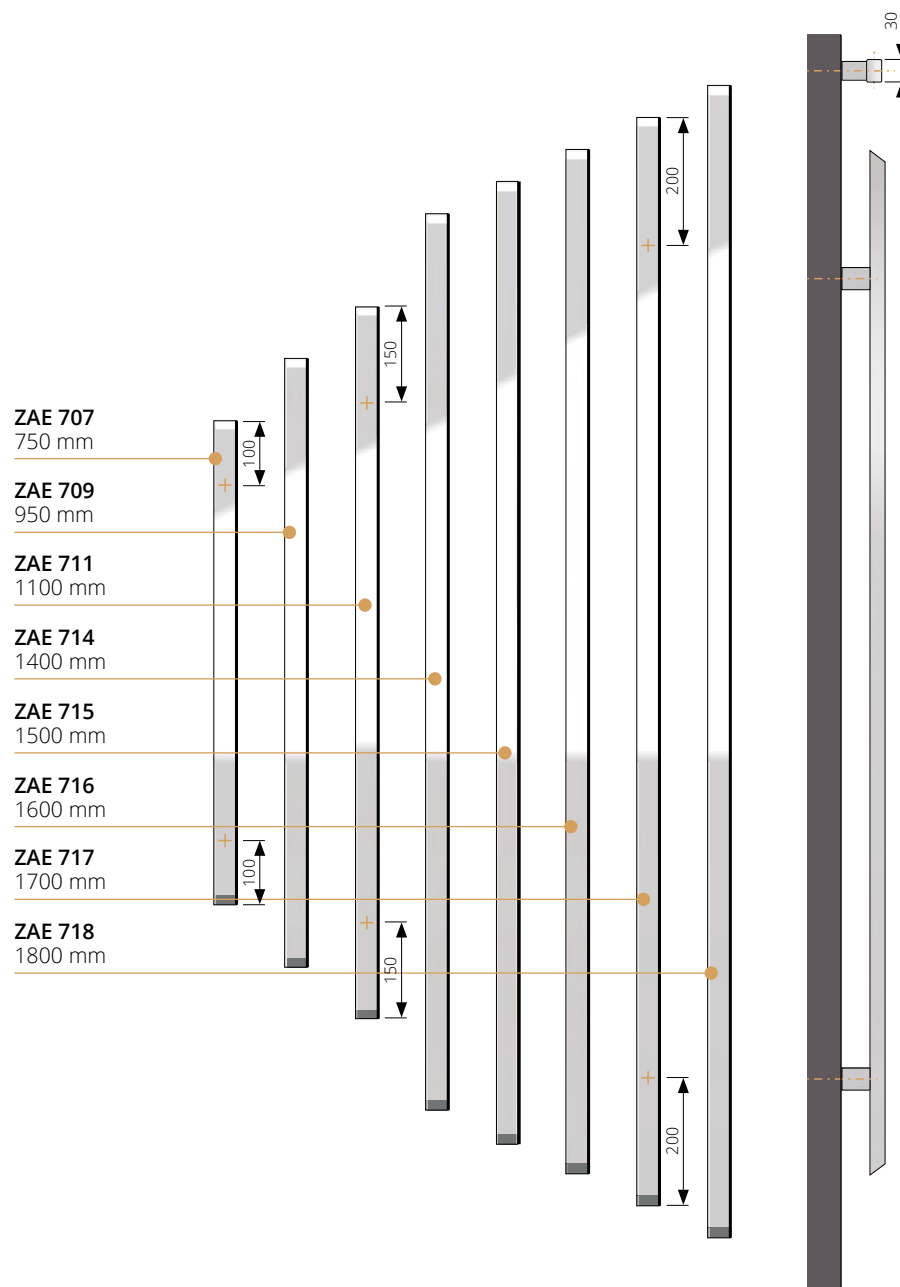
**ZAE 714**  
1400 mm

**ZAE 715**  
1500 mm

**ZAE 716**  
1600 mm

**ZAE 717**  
1700 mm

**ZAE 718**  
1800 mm





# Grips

## 500 series



stainless steel matte

**ZAE 507**  
750 mm

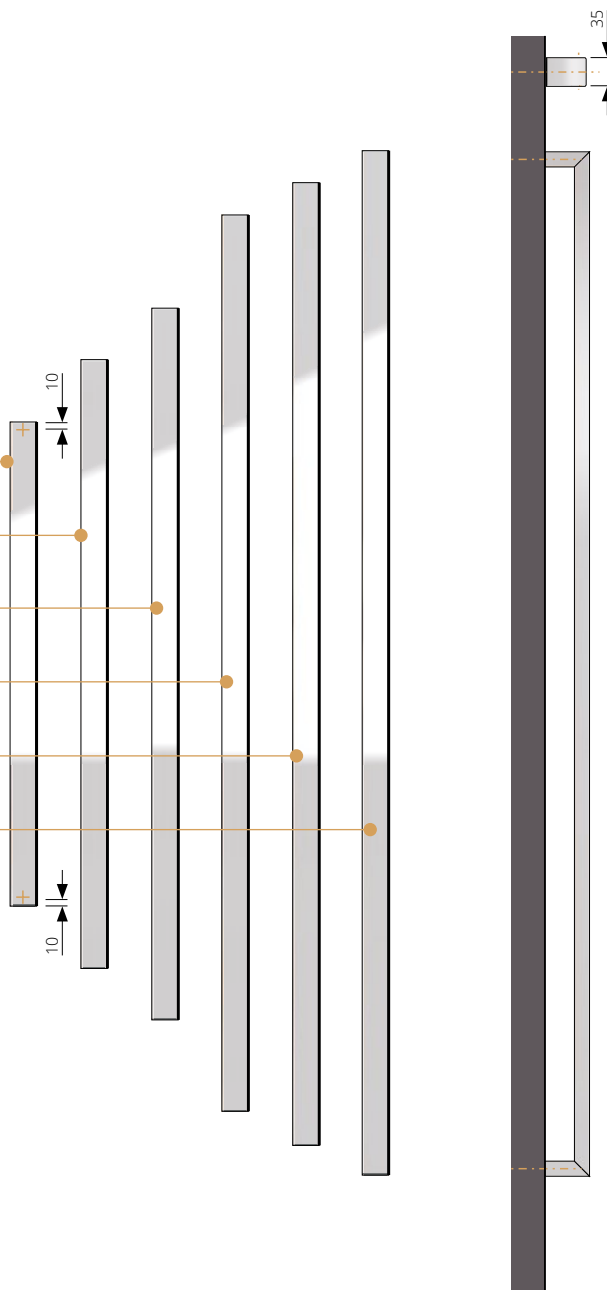
**ZAE 509**  
950 mm

**ZAE 511**  
1100 mm

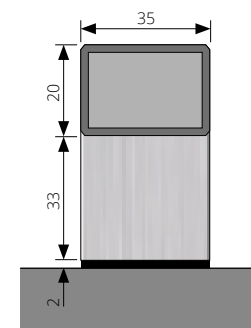
**ZAE 514**  
1400 mm

**ZAE 515**  
1500 mm

**ZAE 516**  
1600 mm

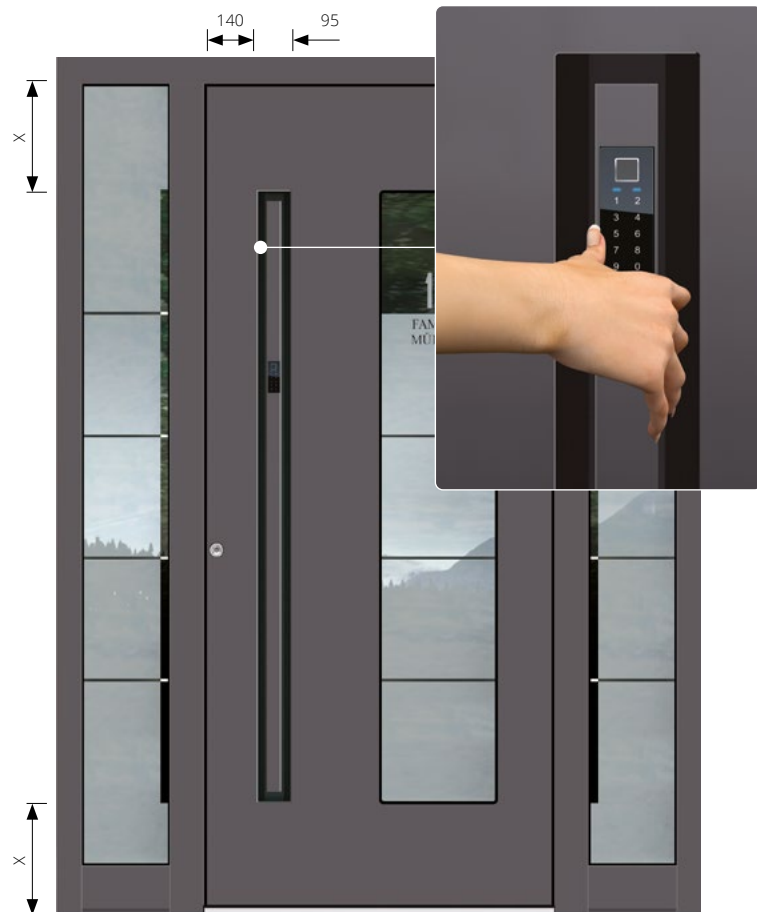


BT 610



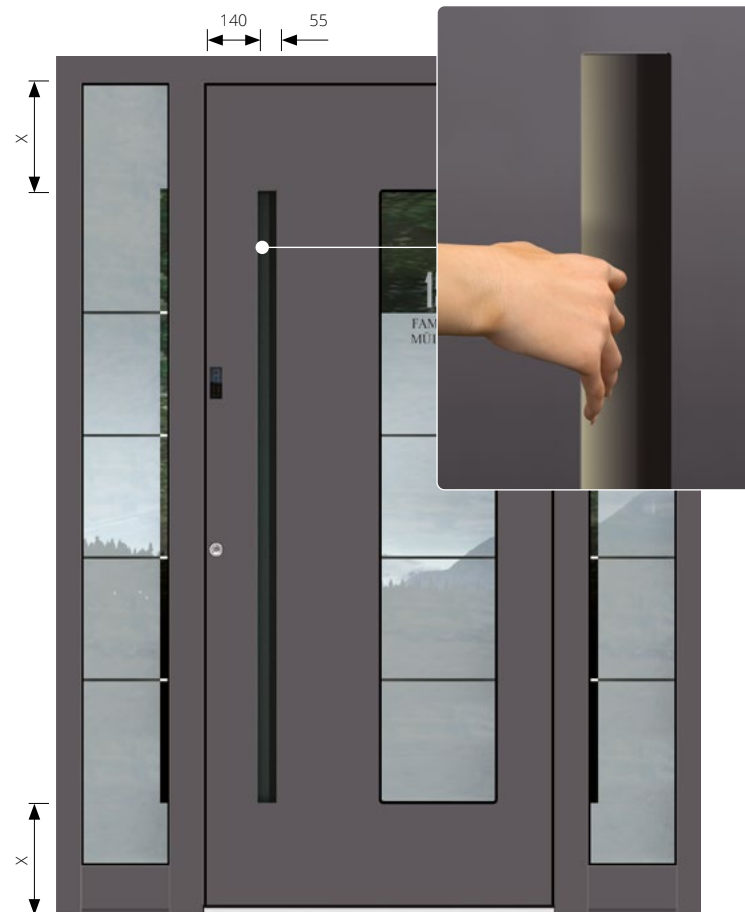


## 500 Series 3D



GM 514	1400 mm
GM 515	1500 mm
GM 516	1600 mm
GM 517	1700 mm
GM 518	1800 mm

## 200 Series 3D



GM 214	1400 mm
GM 215	1500 mm
GM 216	1600 mm
GM 217	1700 mm
GM 218	1800 mm
GM 210	1900 mm
GM 220	2000 mm
GM 227	2700 mm



# Handles

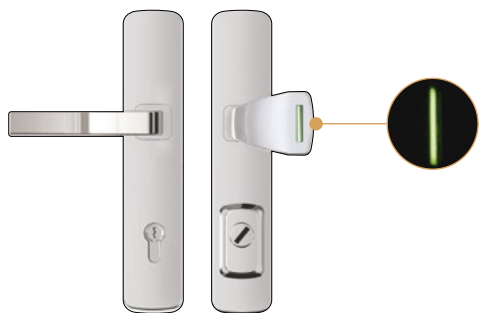
## RC3

Standard door handle set in polished stainless steel. Exterior side: knob / interior side: handle. Polished rosette handle set with integrated standard core guard to prevent reaming. RC3 certified designs in accordance with EN 1906.

**New**

## Illuminated LUMINO handle

- luminescent insert
- requires no power supply
- made of polished stainless steel



**GA 190 LU P**  
stainless steel polished  
lumino illumination



**GA 190 S P / GA 190 LU P**  
stainless steel polished



**GA 191 S P**  
stainless steel polished



**GA 192 P**  
stainless steel polished



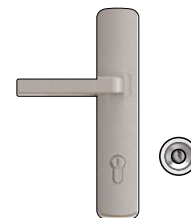
**DK 14**  
stainless steel polished



**GA 190 S E / GA 190 LU E**  
stainless steel matte



**GA 191 S E**  
stainless steel matte



**GA 192 E**  
stainless steel matte



**DK 11**  
stainless steel matte



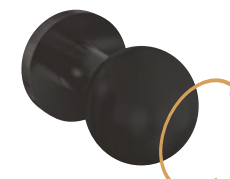
**GA 190 S B**  
varnished black



**GA 191 S B**  
varnished black



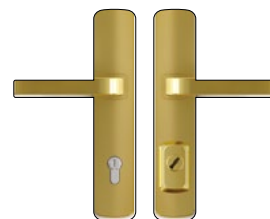
**GA 192 B**  
varnished black



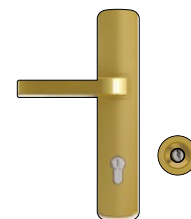
**DK 12**  
varnished black



**GA 190 S G**  
gold coated



**GA 191 S G**  
gold coated



**GA 192 G**  
gold coated

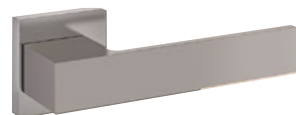


**DK 13**  
gold coated





**ZIE 51**  
stainless steel matte  
lumino illumination



**ZIE 41**  
stainless steel matte



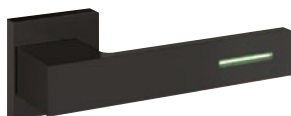
**ZIE 31**  
stainless steel matte



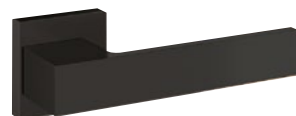
**ZIE 21**  
stainless steel matte /  
stainless steel polished



**ZIE 11**  
stainless steel matte



**ZIE 52**  
varnished black  
lumino illumination



**ZIE 42**  
varnished black



**ZIE 32**  
varnished black



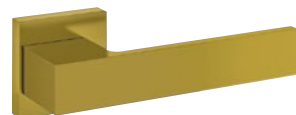
**ZIE 22**  
stainless steel matte /  
black



**ZIE 12**  
stainless steel matte



**ZIE 53**  
stainless steel matte /  
colored



**ZIE 43**  
gold coated



**ZIE 33**  
gold coated



**ZIE 23**  
stainless steel matte /  
gold coated



**ZIE 13**  
stainless steel matte



**ZIE 54**  
varnished black /  
colored



**ZIE 44**  
varnished white



**ZIE 34**  
varnished white



**ZIE 24**  
stainless steel matte /  
white



**ZIE 14**  
stainless steel matte

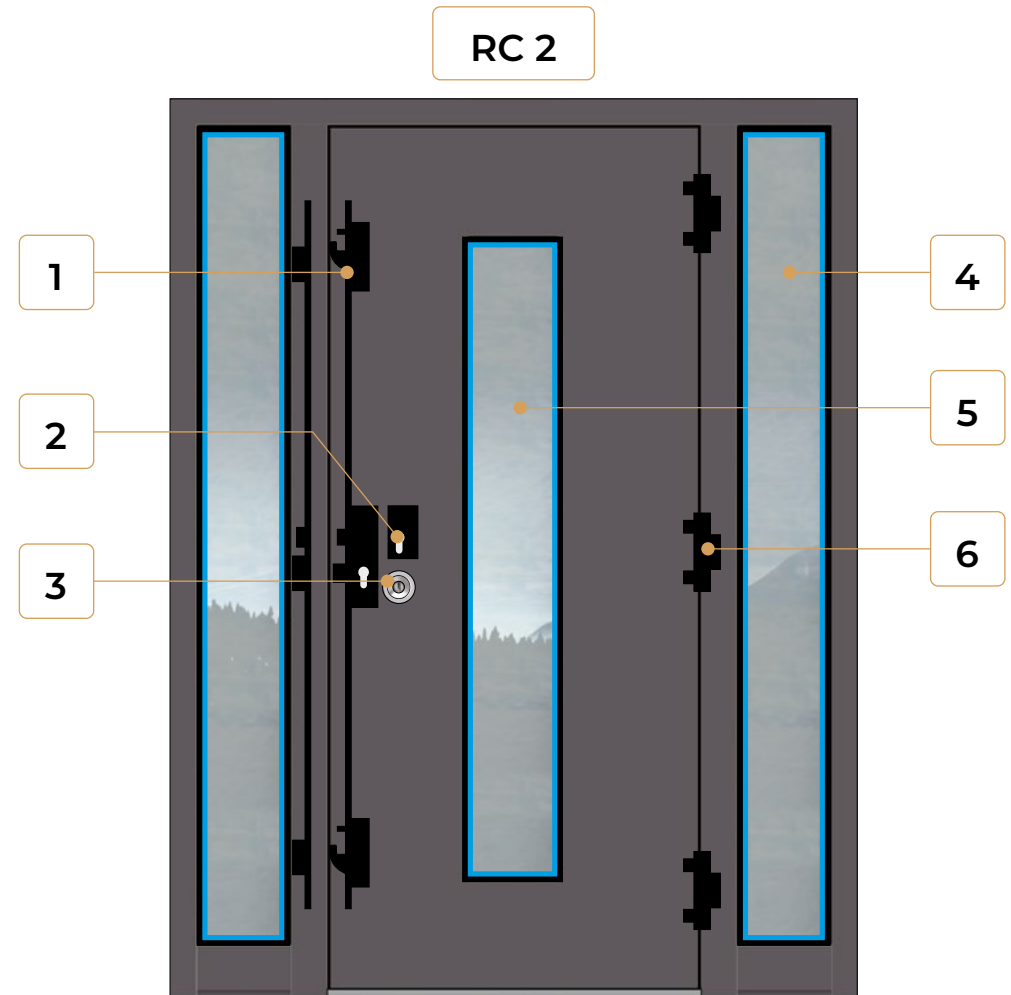


# Security package

## High level of security as standard

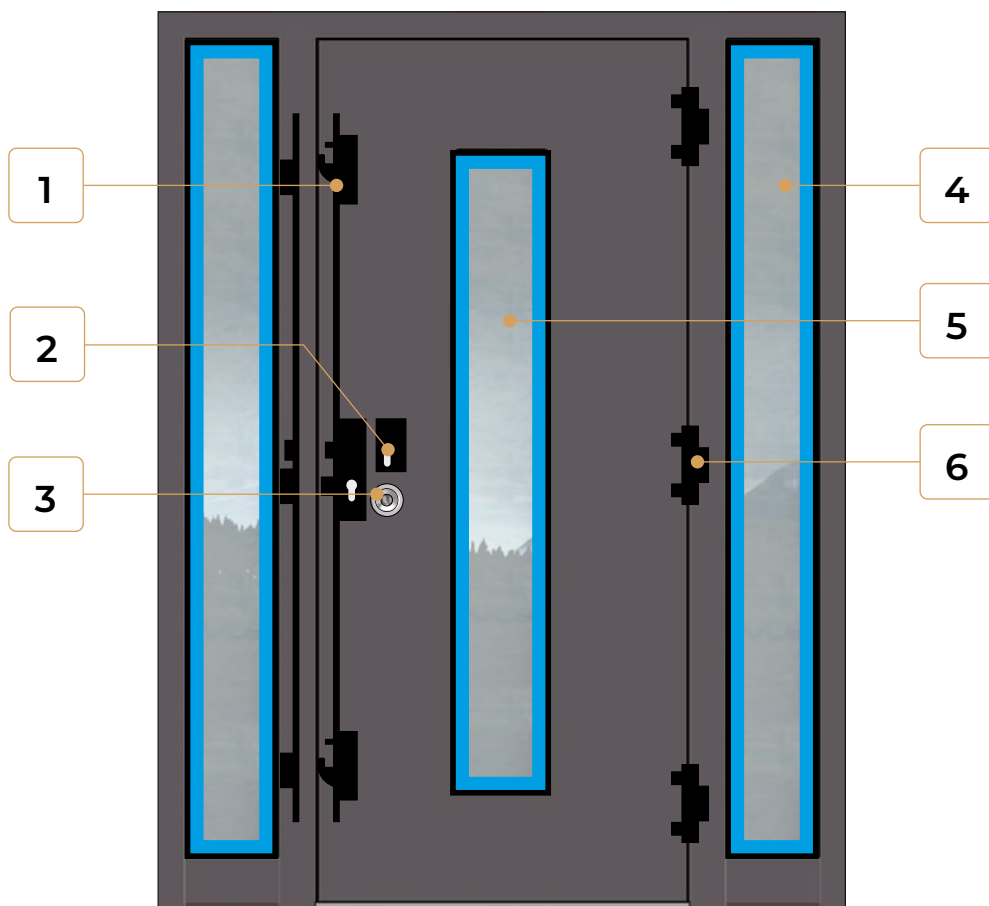
The Premium door series provides a high level of burglary resistance thanks to, among other things, the use of protective signs, multi-point locking systems or the above-average profile thickness of the frame and door leaf. Extended security packages RC2 or RC3 are also available at an extra cost, which have passed rigorous quality tests and have been certified by the ift Rosenheim Institute. Doors in the RC2 package can be supplemented with side or top lights, combining aesthetics with reliable security.

1. Multi-point lock
2. Safety insert K 100
3. Anti-scratch stainless steel plate
4. P4A safety glass on the outside of the sash and fanlights
5. 6 mm VSG safety glass on the inside of the sash and fanlights
6. 3 3D roller hinges



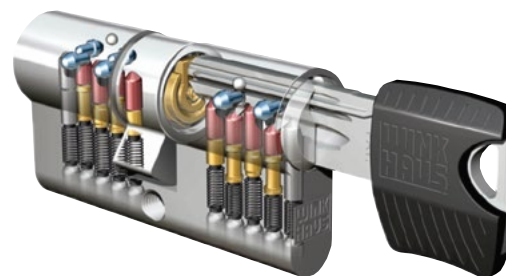


RC 3



#### Insert K 100

Lock with intelligent security system



A special security system and the need to present a security card mean that only authorised persons can make a duplicate key.

1. Multi-point lock
2. Safety insert K 100
3. Anti-scratch stainless steel plate
4. P5A safety glass on the outside of the sash and fanlights
5. 6 mm VSG safety glass on the inside of the sash and fanlights
6. 3 3D roller hinges



# Guarantee

**3 years**

On embedded electronic components, fittings and other moving parts.

**5 years**

On the thermal tightness of the insulating glass units and the stainless steel handles and grips (provided there is no damage caused by external factors).

**10 years**

For flawless operation, sealing and functionality of the product, as well as weather resistance against unnatural colour changes and the formation of cracks on surfaces, including anodised and powder-coated aluminium door profiles.

**30 years**

Guarantee 30 years of error-free operation or product life through the provision of service and spare parts. Replacement parts do not have to be visually identical to the originally installed parts, but should perform the same function. Electronic components are not covered by the warranty. Services required to maintain the flawless operation of the product, required service materials, working hours, etc. are charged according to the price list in force on the day the service is performed.